

PUBLIC NOTICE

RECREATIONAL TRAILS PROGRAM GRANT PROGRAM

Eklutna Lakeside Trail

The Recreational Trails Program grant applicant listed below provides this public notice. If you have any questions or comments about the proposed project, please contact Alaska Trails using the contact below. This notice is being posted on 10/23/20, one month before the grant will be submitted.

Name of Organization or Agency: Alaska Trails

Contact Person: Steve Cleary, Executive Director

Phone: (907)334-8049

Email: steve.cleary@alaska-trails.org

Project Description:

Alaska Trails is seeking funds to complete needed brushing on the Eklutna Lakeside Trail and the non-motorized trail adjacent to it in Chugach State Park. The trail is 12 miles plus the remaining 5 miles of non-motorized trail, for a total of approx. 17 miles to brush.

The specifications for trail clearing at Eklutna include and the non-motorized trail will follow the Trail Management Objectives outlined by Chugach State Park (CSP). Permission will be obtained from CSP for all aspects of this project

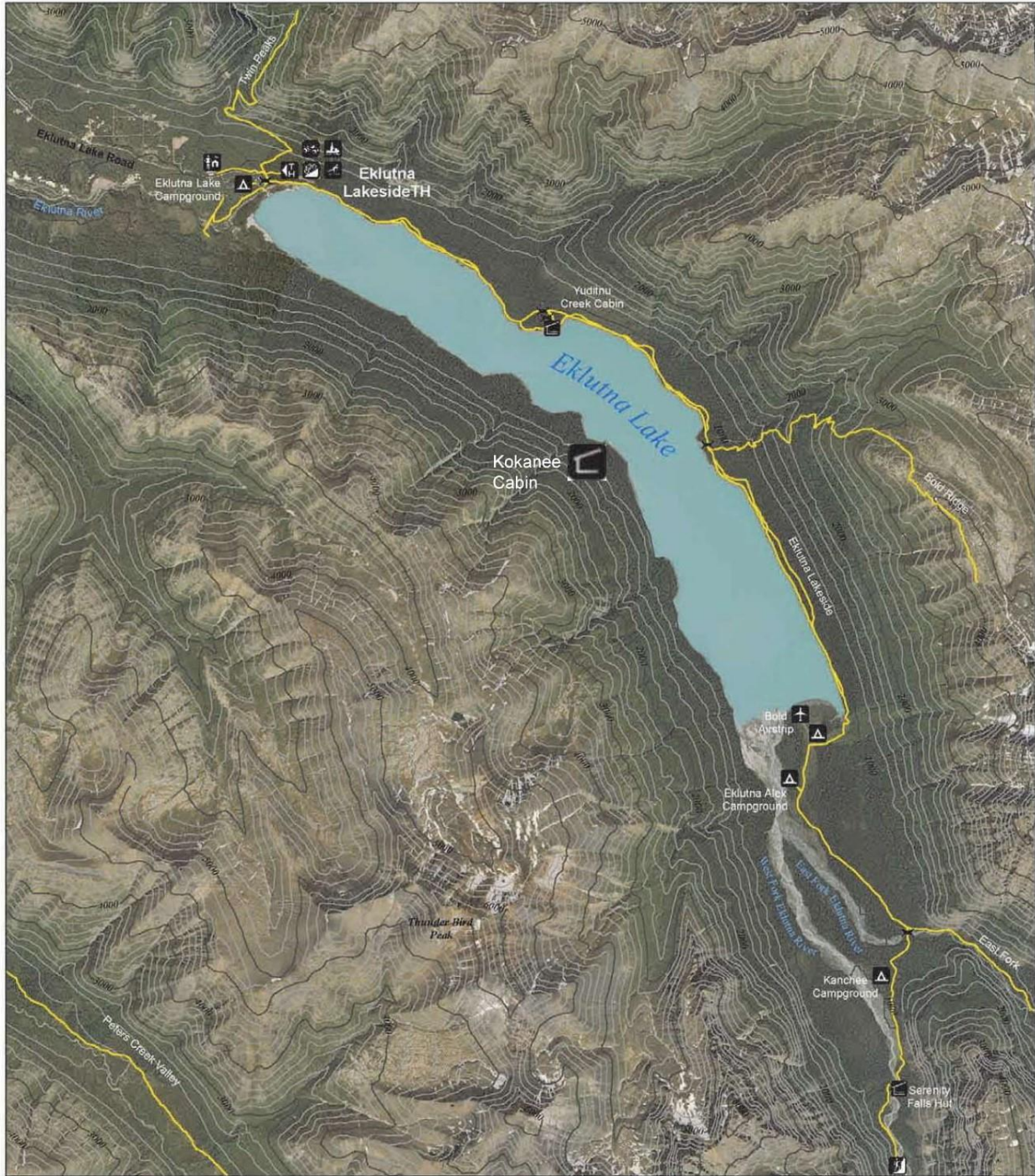
Nearest affected communities: Eklutna, Chugiak, Mirror Lake, Eagle River.

Please reference project map below:



Chugach State Park

Eklutna Lakeside Trail



Produced by: Alaska Department of Natural Resources, Division of Support Services, Land Records Information Section. Date Printed: January 23, 2009. Cartographers: Martin Stald, Mark Turner.

This map represents differential GPS data collected during the Chugach State Park Trail Inventory Pilot Project that was conducted in conjunction with National Park Service (NPS) Rivers and Trails Conservation Assistance (RTCA) program, Alaska Department of Natural Resources (ADNR) Land Records Information Service (LRIS), Department of Parks and Outdoor Recreation (DPOR), and Chugach State Park.

Chugach State Park (907) 345-5914. Email: osp@alaska.gov. Alaska State Parks: www.dnr.state.ak.us/parks. Emergency: 911.

The State of Alaska makes no expressed or implied warranties (including warranties of merchantability and fitness) with respect to the character, function, or capabilities of this product or its appropriateness for any user's purposes. In no event will the State of Alaska be liable for any incidental, indirect, special, consequential or other damages suffered by the user or any other person or entity whether from use of this product, any failure thereof or otherwise, and in no event will the State of Alaska's liability to you or anyone else exceed the fee paid for this product.

Legend

- | | | | |
|--|-----------|--|------------|
| | Camping | | Snowmobile |
| | Trailhead | | ATV |
| | Cabin/Hut | | Ranger |
| | Skiing | | Airstrip |
| | Route | | Bridge |
| | Trailway | | Parking |



Technical assistance provided by the National Park Service - Rivers, Trails and Conservation Assistance Program.



Projected Coordinate System:
NAD 83, State Plane Alaska, Zone 4

Contour Interval: 200 feet

1:56,000



Location Map