



NEWSLETTER

FEB
2022

PO Box 100627; Anchorage, AK 99510-0264

907/334-8049

www.alaska-trails.org

ALASKA TRAILS NEWS AND NOTICES

WE NEED YOUR IDEAS FOR THE 2022 TRAILS CONFERENCE

SUBMIT Alaska Trails is excited to be hosting the 2022 Statewide Trails Conference – April 7-8. We **NEED YOU** to **SHARE YOUR EXPERTISE!**

Please give us **YOUR IDEAS**. Alaska Trails is seeking proposals for presentations and workshops that showcase best practices in trail construction, trail maintenance, economic development, volunteers, trail design, partnerships, trail benefits and trail-related policy. Help make the conference a great kick-off for the 2022 trail season – and beyond!

Send an email with ideas or questions to office@alaska-trails.org.



NEW EMPLOYEE SASSI TO WORK ON STATEWIDE OUTDOOR REC PLAN

Alaska Trails welcomes new employee Amanda Sassi!



Amanda will be working with our team on the Statewide Comprehensive Outdoor Recreation Plan (SCORP).

Amanda fancies herself a recreational athlete who loves to bike, ski, and trail run. Most of the time she is accompanied by her husband and fur baby. Amanda comes to us with a long history of volunteer planning work in her community and an undergraduate degree focused on sustainable communities and active transportation.

In a previous life she worked in rural Alaska as a seasonal paramedic and ski patroller where she often worked with volunteers. Most recently, Amanda has worked in the nonprofit grant community

and hopes to bring some of that knowledge and network to Alaska Trails.

For more information on the SCORP: <https://www.alaska-trails.org/regional-working-groups>

USE “PICK. CLICK. GIVE.” TO DONATE TO ALASKA TRAILS

DONATE Alaska Trails is included in the Permanent Fund Dividend’s “Pick. Click. Give” charitable contributions program. It’s a secure and easy way to make a donation. When you file for your PFD online, you will be given an opportunity to donate using money from your PFD. If you do, please remember Alaska Trails.

If you use “Pick. Click. Give” you will be able to check a box that authorizes the state to send your name, contact information and the amount you give when it sends contributions to an organization. We want to acknowledge and recognize your generous support, and this is the only way we will know it’s you making the gift.



For more information on "Pick. Click. Give" (www.pickclickgive.org/). To go directly to the Alaska Trails "Pick. Click. Give." page click here: www.pickclickgive.org/index.cfm/pfdorgs.info/Alaska-Trails

VIRTUAL RACE ACROSS ALASKA HELPS YOU, ALASKA LONG TRAIL

SIGN UP It's not too late to sign up for the Virtual Race Across Alaska Winter Challenge! You can run, walk, bike, xc ski or swim. The challenge ends March 20. Join other Alaskans in the best winter motivation in exercise! The challenge is also a fundraiser for the Alaska Trails development of the Alaska Long Trail! For every racer that participates, \$10 will be donated to Alaska Trails, plus racers can donate additional funds to support the development of the Alaska Long Trail.

To register and find out more see: <https://www.raawc.com/>



SEEN RECENTLY ON OUR FACEBOOK PAGE



Jan 26: Check out this great video showcasing the great trails and attractions in the Mat-Su as they get read to host the 2024 Arctic Winter Games!
<https://www.youtube.com/watch?v=bwJqx-LAyxc&t=218s>

Jan 13: A big #thankfulthursday shout out to R&M Consultants, Inc. for all the incredible support they provide to Alaska Trails. We are honored so many of their employees chose us for a year-end gift, and we're grateful for their ongoing commitment to trails.



SEVERAL EASY WAYS TO HELP FUND ALASKA TRAILS

With the help of other organizations, you can help Alaska Trails continue advocating for trails.

FASHIONPACT: FashionPACT, an Anchorage resale boutique, seeks to strengthen the Anchorage community by raising funds for local non-profits. You can help by donating gently used clothing, shoes, jewelry, etc. at FashionPACT and choose Alaska Trails. FashionPACT sells the items in their boutique and gives us payment for the things that sell. Learn more at www.FashionPact.com.



BAGOY'S: Anchorage-based Bagoy's Florist and Home helps through its Helping Hands web fundraising program (<https://www.bagoys.com/programs/charitable-giving/>). When you order online from Bagoy's (www.bagoys.com) there is a check box at the bottom of the payment page that says "This is a Helping Hands order." When you check that box, the list of enrolled organizations are shown and you can choose Alaska Trails from the list.



FRED MEYER REWARDS: Sign up for the Community Rewards program by linking your Fred Meyer Rewards Card to Alaska Trails at www.fredmeyer.com/communityrewards. You can search for Alaska Trails or by our nonprofit number – KU871. Then, every time you shop and use your rewards card, you are helping Alaska Trails earn a donation! You still earn your rewards points, fuel points, and rebates, just as you do today.



AMAZONSMILE: If you shop at Amazon, please take the simple extra step of signing up for AmazonSmile. It's the same Amazon website, but when you shop from AmazonSmile, you can make a donation to Alaska Trails at the same time: <https://smile.amazon.com/ch/73-1677483>



STATEWIDE NEWS AND NOTICES

NPS ASSISTANCE PROGRAM APPLICATIONS DUE MARCH 1

APPLY If you are interested in getting technical assistance about trail projects, consider applying for assistance from the National Park Service-Rivers, Trails and Conservation Assistance Program (RTCA).



The RTCA staff program has assisted many communities throughout Alaska with a variety of outdoor recreation and natural resource conservation programs. They help partners: think and plan strategically; communicate ideas and build relationships; find funding sources; navigate state and federal regulations; design and construct trails; and create conservation networks.

If you are interested in assistance, please submit an application to the

Anchorage RTCA office no later than March 1. **The application is available on the RTCA website** (www.nps.gov/orgs/rtca/apply.htm). All sorts of organizations may apply, including local, state, federal and tribal governments, nonprofits and unincorporated groups.

(Photo: Partners help create a conceptual site plan for the Kachemak Heritage Land Trust's Poopdeck Platt Park in Homer,

STATE HUNTER ACCESS PROGRAM APPLICATIONS DUE MARCH 1

APPLY Applications for the Alaska Department of Fish and Game Hunter Access Program are available.

The 2022 program schedule is now posted on the website (<https://tinyurl.com/3hecn5ny>). **Anyone interested in applying should review the updated FAQ's and criteria as you think about project ideas.** Please contact ADF&G with questions. Contact information is on the website.



2022 Program Schedule

- **March 1, 2022: Application due date**
- September 2022: Applicants that have been selected for award are notified
- January 2023: Award and grant agreements are finalized, signed, and implemented

Grants from this program do not necessarily go toward trails, but they often do. Trail projects from this project benefit all trail users. To see example projects use the "Completed Projects" or "Project Map" on the main page (<https://www.adfg.alaska.gov/index.cfm?adfg=hunteraccess.main>).

Photos of Byers Lake bridge from Hunter Access Grant Program webpage

SEEN RECENTLY ON STATEWIDE FACEBOOK PAGES

ALASKA STATE PARKS

Jan 14: Thinking about summer? Maybe summer is thinking about you! 😎🌞

If your upcoming adventures include a Public Use Cabin (PUC), keep in mind that all of our PUCS open seven months out, so to get certain popular ones, you really have to plan ahead! ✅

To get ahead of the game, check out our exclusive Alaska State Parks Reserve America website:

<https://alaskastateparks.reserveamerica.com/>

OR contact our Reservations call center: 1-844-351-9733 today. 👍

📍 Anu Maraimpillai, Caines Head State Recreation Area



Jan 9: Today we recognize Law Enforcement professionals around the country for Law Enforcement



Appreciation Day. 🙌

Included in that group are Alaska State Park Rangers who are commissioned officers that serve their communities by protecting state resources and the people who visit them.

State Park Rangers are first responders who respond to criminal matters, hunting and fishing violations, Search and Rescue missions and natural disasters such as earthquakes, wildfires and severe weather events within State Parks. Additionally, they assist other law enforcement agencies when emergencies arise in remote locations where they serve.

HUGE Thanks to our ASP Rangers for ALL they do!

STATEWIDE LINKS

SLIGHTLY OFF TRAIL

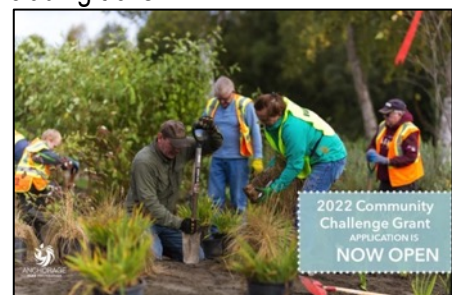
- Changes, including trail aspects, coming to Mile 231 Parks Hwy (FDNM): <https://tinyurl.com/ycksv25m>
- Bridge proposed along section of slumping Alaska park road: <https://tinyurl.com/yz5pupxt>
- Alaskans, get a grip on your dogs (ADN): <https://tinyurl.com/y3d6njv4>

SOUTHCENTRAL NEWS AND NOTICES

ANCHORAGE FOUNDATION SEEKING PROJECTS TO FUND

The Anchorage Park Foundation is seeking projects to grant funds, including trails:

APPLY Fix the trail that runs through your neighborhood park, install Mutt Mitt stations, build an outdoor classroom—now's the time to make your dreams for Anchorage's parks and trails a reality! We are pleased to announce that we are now accepting applications for a new round of Challenge Grant funded projects. This is your chance to make a direct impact on your local parks and trails.



With help from Rasmuson Foundation, we're challenging both community groups and neighbors to earn project funding for an Anchorage municipal park or trail improvement project. Successful applicants will match grant awards, doubling their impact on their favorite park or trail. **The application deadline is March 17th, 2022.**

<https://anchorageparkfoundation.org/programs/challenge-grants/>

Landscape Architect & Planning Advice!

ATTEND This free event will be held Wednesday, February 23, 5:30 PM – 7:30 PM
Spenard Recreation Center

This is your chance to get free advice from landscape architects and park planners about your project idea so you can apply before the March 17 - St. Patrick's Day - deadline. We look forward to working with you! We are planning these in person, so please wear a mask. **For more information contact the APF:** <https://anchorageparkfoundation.org/profile/contact/>

From Anchorage Park Foundation email and Facebook

SEEN RECENTLY ON SOUTHCENTRAL FACEBOOK PAGES

YOUTH EMPLOYMENT IN PARKS

Jan 13: **APPLY** It's our favorite time of the year! The 2022 Youth Employment in Parks (YEP) summer positions are now open! This is a great summer job for Anchorage teens ages 16-19 years old. Get paid to work outside, make lifelong friends, and have the best summer of your life. **Apply today!**

YEP Crew Member Position (closes 3/13/2022):

<https://tinyurl.com/3ptynp4p>

YEP Senior Crew Member Position (closes 3/13/2022): <https://tinyurl.com/35bzdxa8>

YEP Crew Leader (closes 2/27/2022):

<https://tinyurl.com/4upt6b8n>

To learn more about the YEP program visit:

<https://anchorageparkfoundation.org/programs/youth-employment-parks/>



ANCHORAGE TRANSPORTATION PLANNING

Jan 20: The final draft of the Non-motorized Plan (NMP) is out! The NMP merges bicycle, pedestrian, and shared use pathway planning efforts simultaneously. https://bit.ly/AMATS_Non_Motorized_Page

MAT-SU BOROUGH RECREATION AND LIBRARY SERVICES



Jan 17: Our Trail and Parks crew have been working to capacity to remove trees from the trails as quickly as they can. Unfortunately we are noticing that the public is cutting trees as well. Tree removal is very hazardous after an extreme wind event and the conditions at some of our parks and trails is devastating. We are asking the public that wants to help our staff, to please just report down or hazardous trees on our Borough Trails to recreational.services@matsugov.us PLEASE DO NOT CUT DOWN OR REMOVE HAZARDOUS TREES WITHIN BOROUGH PARKS AND TRAILS.

CHUGACH MOUNTAIN BIKE RIDERS

Jan 24: **DO SURVEY** Please comment and take a 1 min survey by Fri Feb 4th and ask that a TRAIL CORRIDOR be included in the Birchwood Airport Master Plan update:

<https://dot.alaska.gov/creg/birchwoodamp/>

We are working to build the northern extension of the Coastal Trail to connect Eklutna to Eagle River. This trail from Fire Creek past Birchwood Airport to the Mouth of Peters Creek is included in the Muni's 1997 Areawide Trails Plan, but no corridor has been identified in the airport plans.

VALLEY MOUNTAIN BIKERS AND HIKERS



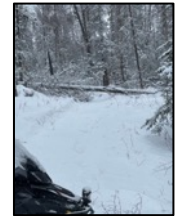
Jan 20: Jonesville Public Use Area Management Plan

On December 21st the MSB Assembly adopted the Jonesville PUA Management Plan. It will now be a part of the Borough's code of ordinances.

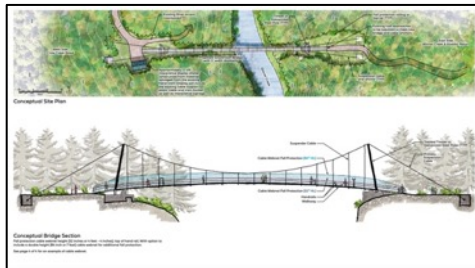
Thank you everyone who sent in comments and spoke in favor of the plan. Public testimony in support of the Plan had a huge impact on the outcome.

There's more to do to make the changes in the plan, but this is a good start, Thanks again.

January 11: VMBaH volunteer crew Eric Nelius, Sarah Masco, Adrian Baer, and Jerry Hupp cleared about 40 trees at the Moose Range today. We cleared the Tree Stand trail to Grizzly/High Traverse and back to the swamp. We did not go north on the Grizzly/High traverse. It is a huge mess of downed trees out there! The photo is at the junction of Tree Stand trail and Grizzly/ High Traverse looking north. There is a lot more work to be done out there!



FRIENDS OF GIRDWOOD TRAILS



Jan 11: Girdwood Parks and Rec presented a concept bridge design at the most recent trail committee meeting. The pedestrian suspension bridge will provide a replacement to the well loved hand tram that crosses Glacier Creek. The bridge plan also includes an interpretive display highlighting the historic hand tram using material salvaged from the tram. The current goal is to construct the bridge summer 2022. We all miss the hand tram, but this

new bridge will be an amazing addition to our trail system.

SOUTHCENTRAL LINKS

- It's time for the Board of Game to address trapping on trails in the Mat-Su (opinion): <https://tinyurl.com/2p9yxrny>
- Mat-Su Trails and Parks Foundation 2021 Impact Report: <https://matsutrails.org/2022/01/19/2021impact/>

SLIGHTLY OFF-TRAIL

- Lars Spurkland Hut Fundraising Update (Alaska Huts): <https://tinyurl.com/5cs473zw>
- Outdoor Explorer
 - The 50th Anniversary of the Hillside ski trails in Anchorage: <https://tinyurl.com/4cf8k8en>

INTERIORWIDE NEWS AND NOTICES

COMMENT SOUGHT ON LAND SALE THAT WOULD PROTECT TRAILS

COMMENT The University of Alaska is seeking comments for a proposal that would protect more trails by transferring land to the Creamer's wildlife refuge.

UA proposes to sell 118 acres to the Conservation Fund, which would then transfer the land to the state to be included in the Creamer's Field State Migratory Waterfowl Refuge, which is run by the Alaska Department of Fish and Game. The land in question, which is north of the Tanana Valley State Fairgrounds, has portions of several Alaska Dog Musher's Association trails. Being in the refuge gives the trails a high level of protection.

To comment, send written comments to the UA Land Management office by fax at (907) 786-7733, by email at ua-land@alaska.edu, or by regular mail. Comments must be received by no later than 5pm on Monday, February 21. A link to the notice (which has the regular mail addresses and a map) can be found here: www.alaska.edu/ualand/public-notice/2022/College-Road-PN.pdf



This same process – transfer by sale to the Conservation Fund – resulted in 530 acres, including several portions of ADMA trails, being added to the wildlife refuge. The Conservation Fund has also purchased private land to be added to the refuge. Read more about the conservation group here: www.conservationfund.org/

A story about the 530 acres of land finally being transferred to the wildlife refuge can be found in the November 2020 edition of the Interior Trails Newsletter, which can be found here: <https://tinyurl.com/3hy2vpun>

While that land transfer was generally been praised by trail advocates, it was not without controversy. The largest chunk of land was involved in a subdivision in which protections for other parts of ADMA trails were given up. You can read about that here:

- The Case of the ADMA Trails and Creamer's Field: <https://tinyurl.com/r29c5vx>
- The Continuing Case of the ADMA Trails and Creamer's Field: <https://tinyurl.com/wbh8xph>
- Planning Board Approves Variance Affecting ADMA Trails: <https://tinyurl.com/txh6kxm>

DEEP SNOW, ICE MAKE TRAIL PROBLEMS WITH MOOSE MORE LIKELY

Be especially careful about moose while out on the trails this winter. They are stressed and much more aggressive than usual.

The end-of-year storms gave us a lot of snow with a layer of ice in between. This makes it very difficult for the moose to get around. Many will starve. As a result, they are extremely stressed and can get aggressive. As one commentator put it: "With the ice layer and volume of snow, all animals big and small are going to go through a catastrophic winter and a die-off event. It's quite heartbreaking."

Try to avoid them, if you can. If you encounter one on the trail, if at all possible, turn around rather than try to chase them off the trail. It's better for them and you. Several people in the Interior have already been attacked by stressed moose. At least one person ended up in the hospital. Several moose have been killed in defense of life or property. Consider carrying bear spray on your trail journeys. While there's no guarantee it will dissuade an angry moose, it could help, and it has been proven to work to at least 20 below.



Also, please keep tight control of your dogs. They don't know any better and many love to chase moose. Besides being bad for moose, it may be bad for your dogs. Moose have evolved with wolves. They are perfectly capable of injuring or even killing a dog.

And here's a good article on the ice layer and it's affect on animals: <https://tinyurl.com/3hjrv2e7>

Helping the moose

At least one biologist has a suggestion for helping the moose. "Find an out of the way place and knock down mature aspen, cottonwood, and birch. They will get good nutrition in a concentrated area with this technique. They will eat all the twigs off the top, and even peel the bark on certain trees. Pack a trail to the food source." If you do this make sure you are taking down trees in an area where it's allowed. Also, make sure to take that "out of the way" advice to heart. Create any easy browse out of neighborhoods. Also, try to tromp away off any trails so that the moose aren't eating right next to the trail. Doing so may actually help reduce moose encounters. You can also use snowshoes or a snowmachine to create paths to moose browse.

Here are a few links to information about the situation

- Reports of aggressive moose attacks on the rise around Interior (KUAC): <https://fm.kuac.org/2022-01-05/reports-of-aggressive-moose-attacks-on-the-rise-around-interior>
- ADFG Aggressive moose page: <http://www.adfg.alaska.gov/index.cfm%3Fadfg%3Dlivewith.aggressivemoose>
- A good article on the ice layer and it's affect on animals: <https://www.gi.alaska.edu/alaska-science-forum/midwinter-rain-snow-game-changer>

Photo from Fairbanks North Star Borough Parks and Recreation Facebook page (from previous year)

ADMA ASKS TRAIL USERS TO HELP WITH GROOMING, OTHER COSTS

DONATE The Alaska Dog Musher's Association trails are an incredible asset right in the middle of Fairbanks. But maintenance of the trails (and plowing of the Musher's Hall parking lot) are not paid for by any government entity. If you use these trails (or the parking lot to access trails), please read the following, which came from an ADMA Facebook post.

Help pay for Your ADMA trails.

It costs the Alaska Dog Musher's Association \$7,000 to \$15,000 a season to groom and maintain just under 30 miles of "non-motorized multi-use recreational trail" as described by the Alaska Department of Fish and Game, which manages the majority of the land in play that is a part of Creamer's Field Migratory Waterfowl Refuge. The department holds our general use permit which outlines all the things we can and can't do within the Refuge.

The Community of Fairbanks is blessed with this Refuge right in the heart of our City and the recreational opportunities it provides. ADMA has easements in place on other portions of the trail that are not within the Refuge and ADMA owns the 40 acres off of Farmers Loop Road up to the power line easement.

The majority of the Community is under the assumption these are public lands intended for public use and that anything goes, especially in the ADMA parking lot and the Jeff Studdert Race Trail. It is my sincere hope that these trails and lands are intended for all our enjoyment and use. But, as with anything else, that comes with necessary rules and regulations.

And, of course, somebody always has to pay the bill. Lately, ADMA absorbs the grooming and maintenance costs with very little outside assistance other than the volunteer board of directors and the paying club members. Keeping the parking lot plowed costs ADMA \$15,000 to \$20,000 per year. As with our public streets, which are paid for by tax dollars, our trail/parking area could be that much better, safer and self sufficient if all User's of the Trail System paid their daily use fee of \$5 per person per day or a yearly trail fee of \$75 per person per season.

It doesn't matter if you're on a snowmachine, walking, running, skiing, fat biking, bikjoring, skijoring, Dog Mushing, trapping, hunting, etc. If you are on any portion of ADMA's groomed trail or property, you are entering into an unwritten agreement with ADMA to pay your daily user fee, yearly trail fee or to be a member in good standing with ADMA which is \$50 per year. We mostly operate under the honor system and this issue is hard to police, so please Golden Heart City, Community, show me that you care and appreciate what we at ADMA do for our Community. Fees can be paid online at the ADMA website and or dropped in the drop box at the Musher's Hall.

Ana' Basee' Thank You
ADMA Trail Boss Carl Erhart



Map of old ADMA trails from ADMA Facebook post

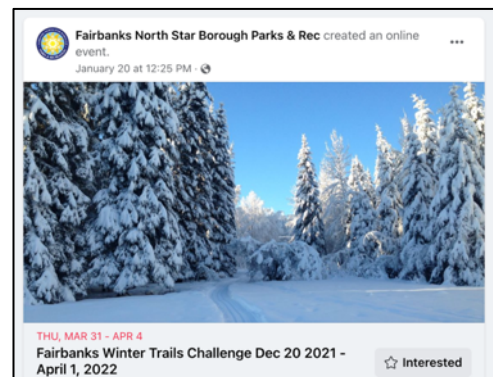
FAIRBANKS, DELTA JUNCTION HOLD WINTER TRAILS CHALLENGES

The Fairbanks Borough Winter Trails Challenge finally has a Facebook Event and a guidebook.

- Here's a link to the guide: <https://tinyurl.com/yc32p7s5>
- Here's the Facebook event: <https://www.facebook.com/events/264289499067287/>

However, as of the most recent update, not all the signs have been installed. Here is info from January 18:

UPDATE: Signs #1-10 & #12 are installed. After multiple winter storms, trail conditions remain very difficult throughout the region and many parking/access areas are unplowed. This has also delayed our ability to install the Trails Challenge signs. As trails become more accessible,



we will install remaining signs and keep visitors updated.

DELTA JUNCTION TRAILS CHALLENGE

The Delta Junction Trails Association is holding it's trails challenge through March. Here's a post from the group's Facebook page (<https://www.facebook.com/DeltaJunctionTrails>):

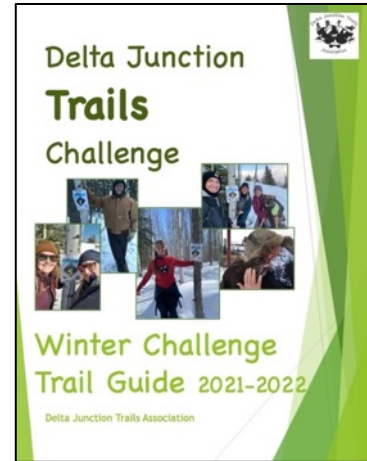
Join DJTA for the Delta Junction Winter Trails Challenge from now through March. Get out and explore your local trails by hiking, snowshoeing, skiing, or running. Take a selfie at the temporary challenge signs placed on each trail and post it to social media using the hashtag "#DJTAtrails" or email to

deltajunctiontrailsassociation@gmail.com.

Complete the challenge by finding at least 5 of the 6 trail signs. Individuals that submit their pictures showing they completed the challenge will receive a Winter Challenge sticker and be eligible to win a Deltana Trail Guide, Hydro Flask water bottle, and an annual DJTA membership to use in 2022 or 2023. To be sure we know you are entering, send a sign-up email to the above address with Trails Challenge in the subject line.

Challenge yourself by finding them all!

Page through the photos below to see the pages of the guide. You may request a higher resolution pdf at the email address above.



You can also download the guide at the group's website: <http://www.deltajunctiontrails.com/>

SEEN RECENTLY ON INTERIOR FACEBOOK PAGES

FAIRBANKS TRAIL USERS OPEN GROUP

Jan 23: **ADVOCATE** Good news! The Ballaine parking pullout in Goldstream Valley has been plowed by the Department of Transportation! This serves as a major trailhead for trails in the Goldstream Valley. It has been buried since the big storms. I encourage people to thank DOT for doing that. (Contact info below).

ELDORADO CREEK TRAILHEAD

However, another important trailhead parking lot at Eldorado Creek (across from Buck's Drive) is still buried in snow. This trailhead, which is also under DOT's responsibility, provides access to the Eldorado Creek Trail, which connects trails on Goldstream Valley to trails in the hills north of Goldstream Valley.

If the Eldorado Creek Trailhead parking is important to you, please let the DOT Northern Region director know. If we don't speak up, he'll assume it's not that important.

If you do let him know, please remember to be polite and understanding. DOT has lots to do with a shrinking budget. And don't forget to say thanks for plowing the Ballaine Road parking pullout.

Joe Kemp, P.E.; Acting Regional Director; Northern Region
(907) 451-2210; joseph.kemp@alaska.gov



Photo of Eldorado Creek Trailhead by Eric Troyer

NORDIC SKI CLUB OF FAIRBANKS

Jan 21: For you classic-only trails lovers, the NSCF grooming crew does not plan to groom the east side of North Star for the rest of the season. Here's why from Head Trail Groomer Tom Helmers:
--Guys are tired of nearly rolling the machines over in multiple areas, having to use come alongs to get up hills. Climate change has been pretty rough on a couple of ice lenses. We will look at alternate routing next summer.--

SKARLAND & PEARL CREEK TRAIL USERS

Andrew Larsen



Jan 23: After the storm of 2021/22, three of us cleared 10 or so trees off of the upper Skarland trail and had to pack the snow down with the Super Wide in order to get the drag pull-able to smooth the course out the second time around in order to set tracks the third time around all the while chipping away at all of the berms at all of the road crossings where plows had piled 6 feet of snow. Hard work but very rewarding thanks to the help of others when the track setter gets stuck on those up hills. Lol

INTERIORWIDE LINKS

- Public Easement Decision for Antler Creek Trail in Healy: <http://notice.alaska.gov/205002>
- Easement Application for Leiwier Community Trail: <http://notice.alaska.gov/205064>
- White Mountains Loop.. (Jay Cable blog): <https://yak.spruceboy.net/2022/01/white-mountains-loop.html>

SLIGHTLY OFF-TRAIL

- The 750-mile Race to Alaska is back on after a 2-year pandemic hiatus: <https://tinyurl.com/2p9ftmyf>

SOUTHEAST NEWS AND NOTICES

SEEN RECENTLY ON SOUTHEAST FACEBOOK PAGES

SITKA TRAIL WORKS, INC.

Jan 26: Sitka Trail Works Executive Director Ben Hughey was on KCAW Morning Edition today, talking about the future and how you can get involved!

<https://tinyurl.com/yph82abk>



Jan 22: ⚠ Warning! There's a major washout on the Cross Trail, between Kramer and Cascade Creek. This could be dangerous for anyone biking downhill from the Kramer trailhead. Be extra cautious on the trails right now!

Jan 20: **APPLY** We're hiring! Join our team and help us chart the future for Sitka's trails!

Find the job description for the Administrative Assistant online at: <https://sitkatrailworks.org/were-hiring/>

The Administrative Assistant is responsible for keeping the day-to-day operations running smoothly so that we can effectively fulfill our mission of building, maintaining, and promoting trails. The successful candidate will be a self-starter who seeks out efficiencies while ensuring a rigorous attention to detail.

The Administrative Assistant performs regular bookkeeping duties for Sitka Trail Works including receiving donations and managing of donor data, entering bills and preparing checks, submitting payroll to CPA, running reports, reconciling bank statements, drafting sales tax returns, and ensuring accurate financial record-keeping. The Administrative Assistant follows a renewal schedule to maintain insurance policies and required state licensing and certifications.

The position helps Sitka Trail Works communicate with Sitkans by preparing PSAs for distribution to local media outlets, website updates, MailChimp announcements, newsletters, and social media posts. The Administrative Assistant coordinates the Trail Works summer hike program, led by volunteer board members.



CITY AND BOROUGH OF SITKA

Jan 24: On January 22, the City and Borough of Sitka Public Works closed a section of the Sitka Cross Trail from Cascade Creek Bridge to Kramer Avenue after receiving reports a localized erosion and embankment failure that has made the trail unsafe and impassable. The closure will remain in effect until further notice. Please avoid the area and follow all signage.

We apologize for the inconvenience and appreciate your patience during this timeframe. Please contact the CBS Public Works Department with any questions. 907-747-1804.

TRAIL MIX, INC.

Trail Mix, Inc.

Jan 26: ⚠️ Trail Damage ⚠️

It's been a very wet week, and unfortunately, our trails did not escape impact. Juneau received over 10 inches of precipitation in the last 7 days, and the atmospheric river over the weekend meant it was particularly heavy at times.

From Juneau Parks & Recreation: "Recent avalanche and landslide activity in the Basin Road and Perseverance Trailhead area has blocked both Perseverance access trails and portions of Basin Road. The stability of these areas is unknown and additional slide activity may occur at any time. Existing hazards include unstable trail that is undercut by landslide and avalanche debris on trails and the road, including snow, trees, dirt, and, rocks.

CBJ needs to perform major maintenance work but is unable to safely do so until the snow melts and an evaluation of the slides can be made."

Thanks to everyone who made us aware of this, and a reminder to please use the trail damage report to alert us to trails that need attention: bit.ly/juneautrailsreport



JUNEAU PARKS & RECREATION

Jan 26: Recent avalanche and landslide activity in the Basin Road and Perseverance Trailhead area has blocked both Perseverance access trails and portions of Basin Road. The stability of these areas is unknown and additional slide activity may occur at any time. Existing hazards include unstable trail that is undercut by landslide and avalanche debris on trails and the road, including snow, trees, dirt, and rocks.

The City and Borough of Juneau needs to perform major maintenance work but is unable to safely do so until the snow melts and an evaluation of the slides can be made.

For more information, contact CBJ Emergency Programs Manager Tom Mattice at 907-586-0419 or Tom.Mattice@juneau.org.



NATIONWIDE NEWS AND NOTICES

REGISTRATION OPEN FOR 2022 AHS VOLUNTEER VACATIONS

VOLUNTEER Registration is now open for 2022 Volunteer Vacations! Join American Hiking Society for a week of building and maintaining trails in breathtaking locations across the country. Work hard, get dirty, dig deep and feel immensely rewarded while conducting service that will bring outdoor adventures to others for years to come. Extra precautions are in place to keep our volunteers safe including vaccine requirements, social distancing, and outdoor accommodations at select destinations.



Join us on a Volunteer Vacation in 2022 and camp amongst Joshua Trees in Joshua Tree National Park, explore the deep history at Camp Nelson National Monument, backpack in Montana's rugged and beautiful Bitterroot National Forest, relax on the beach after maintaining trails in the Virgin Islands National Park, or join one of many recurring trips in your favorite local and state parks! Find all these trips on the full 2022 Volunteer Vacations Schedule!

If you have any questions please visit <https://americanhiking.org/volunteer-vacations/>, email volunteer@americanhiking.org or call (800) 972-8608 ext. 704

For the 2022 full schedule & registration: <https://americanhiking.org/volunteer-vacation-trips/>

From American Hiking Society email

NATIONWIDE / INTERNATIONAL LINKS

WEBINARS, MEETINGS, CONFERENCES, TRAINING, ETC.

- For a listing of upcoming trail webinars workshops, conferences, and other meetings, see the American Trails calendar at: www.americantrails.org/training/calendar

TRAILS-RELATED NEWSLETTERS

- American Trails "Trail Tracks": www.americantrails.org/newsletter

FUNDING

- National Forest Foundation awards (deadline Jun 22): <http://tinyurl.com/px7y6ke>
- Yamaha Outdoor Access Initiative (OHVs, next deadline Mar 31): <https://yamahaoai.com/>
- Polaris T.R.A.I.L.S. grants (ATV trail projects; due March 1): <https://tinyurl.com/y49dxbhe>
- FOX Factory Trail Trust (applications reviewed quarterly): <https://tinyurl.com/bdfjevrd>

OTHER NATIONAL LINKS:

- Off-Trail Trampling Has Lasting Impacts: <https://daily.jstor.org/off-trail-trampling-has-lasting-impacts/>
- Shared-Use Trail Hub (American Trails): www.americantrails.org/resources/shared-use-trail-hub
- How Far Is It? The Truth Behind Trail Measurements: <https://tinyurl.com/htedj2um>
- Florida Keys Bridge Reopens As a Beautiful Walking and Biking Trail: <https://tinyurl.com/3ujmht8a>
- Deciding on Trails: 7 Practices of Healthy Trail Towns: <https://tinyurl.com/j4ra952h>

The Alaska Trails board meets via teleconference the first Tuesday of every other month from 5-7pm. If you want to hear more about Alaska trail topics, share trail information, or propose a trail project, join us. Members and the public are welcome. Call for more information and meeting details [907-334-8049](tel:907-334-8049).

A copy of this newsletter will also be posted to our web site. Newsletters come out at the beginning of each month. Deadline for articles is seven days before the first of the month. Send stories to Editor Eric Troyer at fbxtrails@gmail.com