



Alaska Trails Conference

Lia Slemons, Trails Coordinator

April 18, 2019

What is a National Heritage Area?

Places where outstanding natural, cultural, historic and scenic resources combine to form a cohesive, nationally important landscape.

- Established by Congress
- Funded through National Park Service
- Remain locally planned and driven
- Designation has no effect on property rights



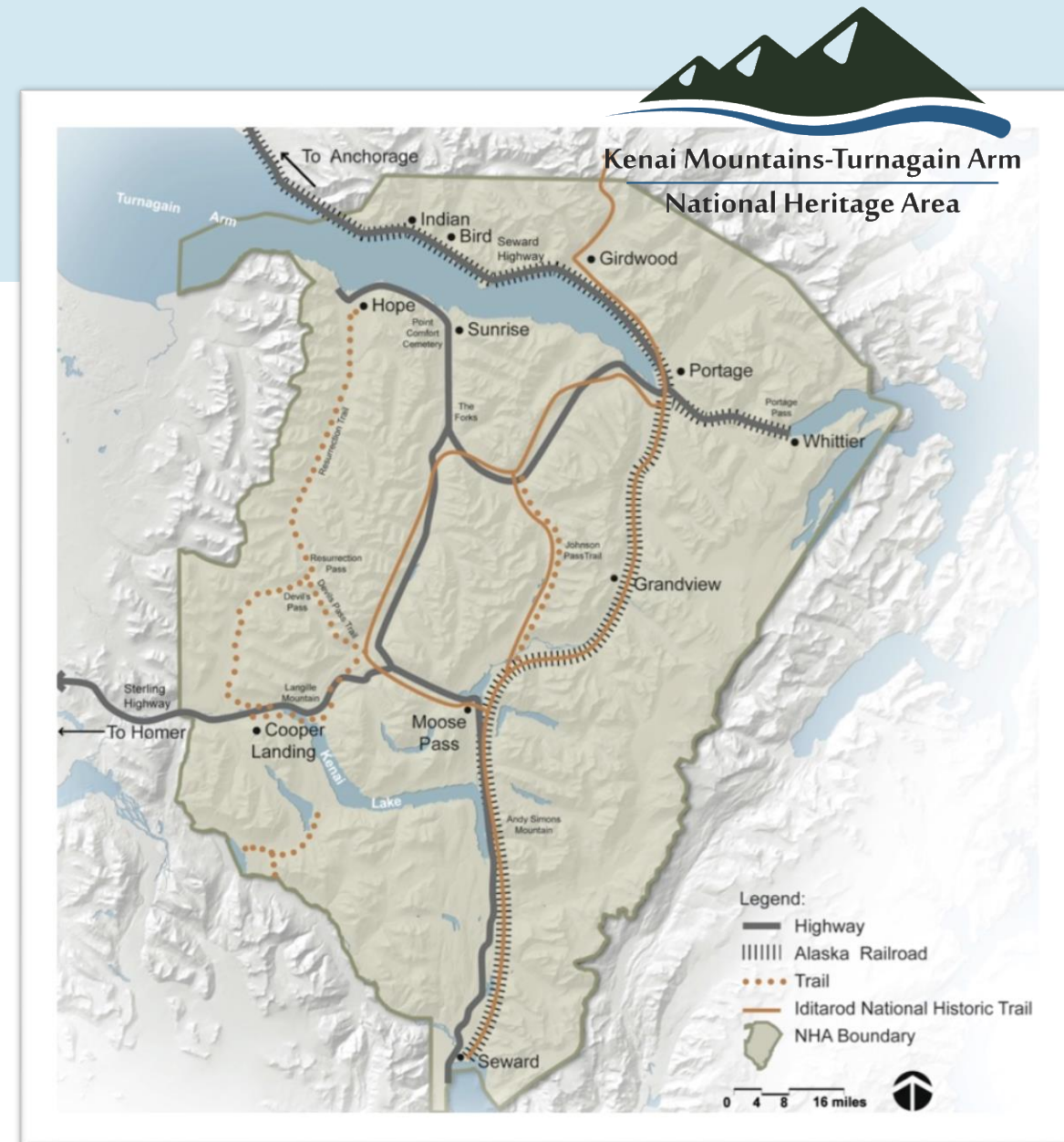
“National Heritage Areas are places whose stories tie our Nation together.”

-- Dr. Herman Blake

The Kenai Mountains-Turnagain Arm National Heritage Area

Established in 2009, the Kenai Mountain Turnagain Arm National Heritage Area includes the communities of Indian, Bird, Girdwood, Portage, Whittier, Hope, Moose Pass, Seward, and Cooper Landing... and parts of:

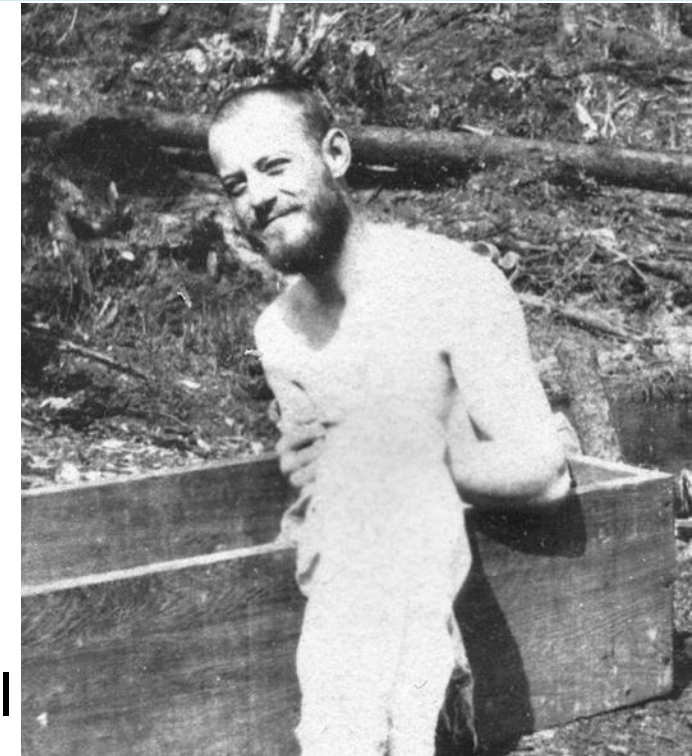
- Chugach State Park
- Chugach National Forest
- Kenai Fjords National Park



What we do



- **Preserve, promote, and protect** the cultural, historical and scenic amenities of Kenai Mountains-Turnagain Arm area.
- **Partner with communities** from Seward to Girdwood and Cooper Landing to Whittier to tell your stories of this gateway corridor.
- Develop and promote **public-private partnerships**.
- For every federal dollar we grant, it is **matched** with grassroots work or donations.
- Equip local **museums, schools, and trail groups** to investigate and show your history through small **grants** and the platform of a National Heritage Area.



Miner bathing in a sluicebox,
Sixmile Creek 1898
Photo: Donald Clickner

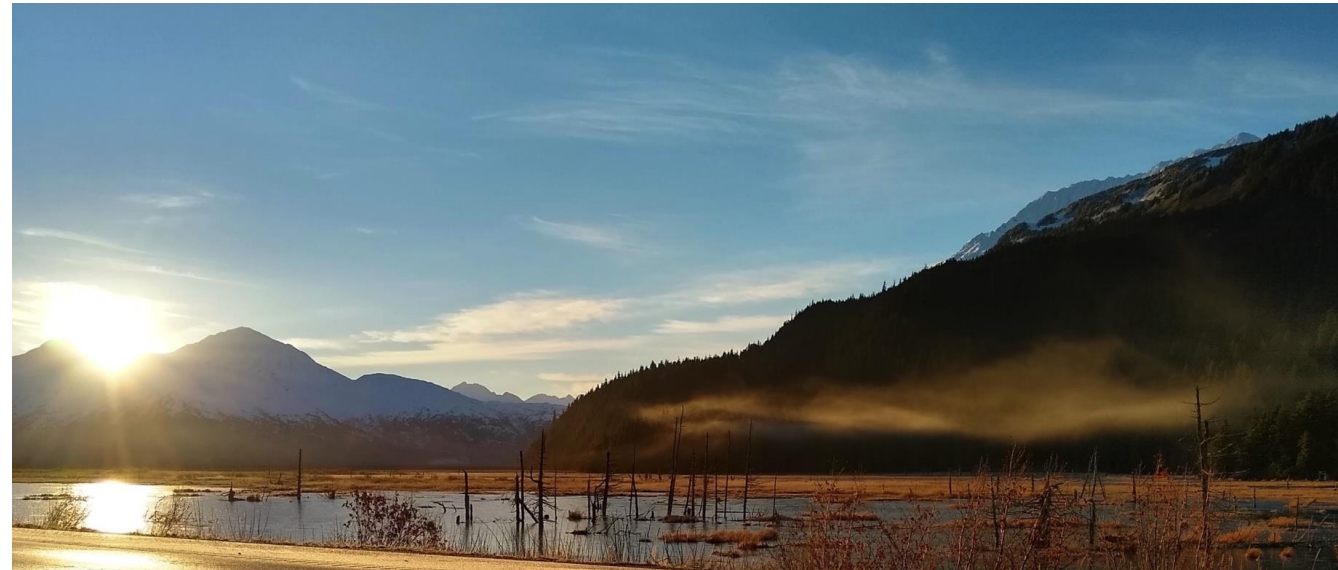
Grants Program: Big Picture



- Application period for competitive grants open twice a year (next up August 2019)
- Award range is \$300 - \$10,000 for first-time applicants. Past recipients up to \$24,500.
- Work undertaken and completed within a 12-month period.

Viable Projects Must:

- Enable the preservation, interpretation, and promotion of the region's resources with an emphasis on partnerships.
- Demonstrate a clear public benefit.
- Have a significant impact on the Heritage Area.



KMTA Grants are Federal Funds...



Subject to federal laws and regulations

- Uniform Administrative Requirements, Cost Principles & Audit Requirement for Federal Awards (2CFR200)
- Section 106 Historic Preservation Act, National Environmental Protection Act, Buy American Act
- Require a 1:1 match of non-federal funds, which may be cash or in-kind

Grants scored on Essential Criteria:



- Within the Heritage Area
- Increase public awareness and appreciation of natural, historic, and cultural resources
- Sponsor must be a community or governmental organization active within the Heritage Area
- If public lands are involved, project has approval of the land manager



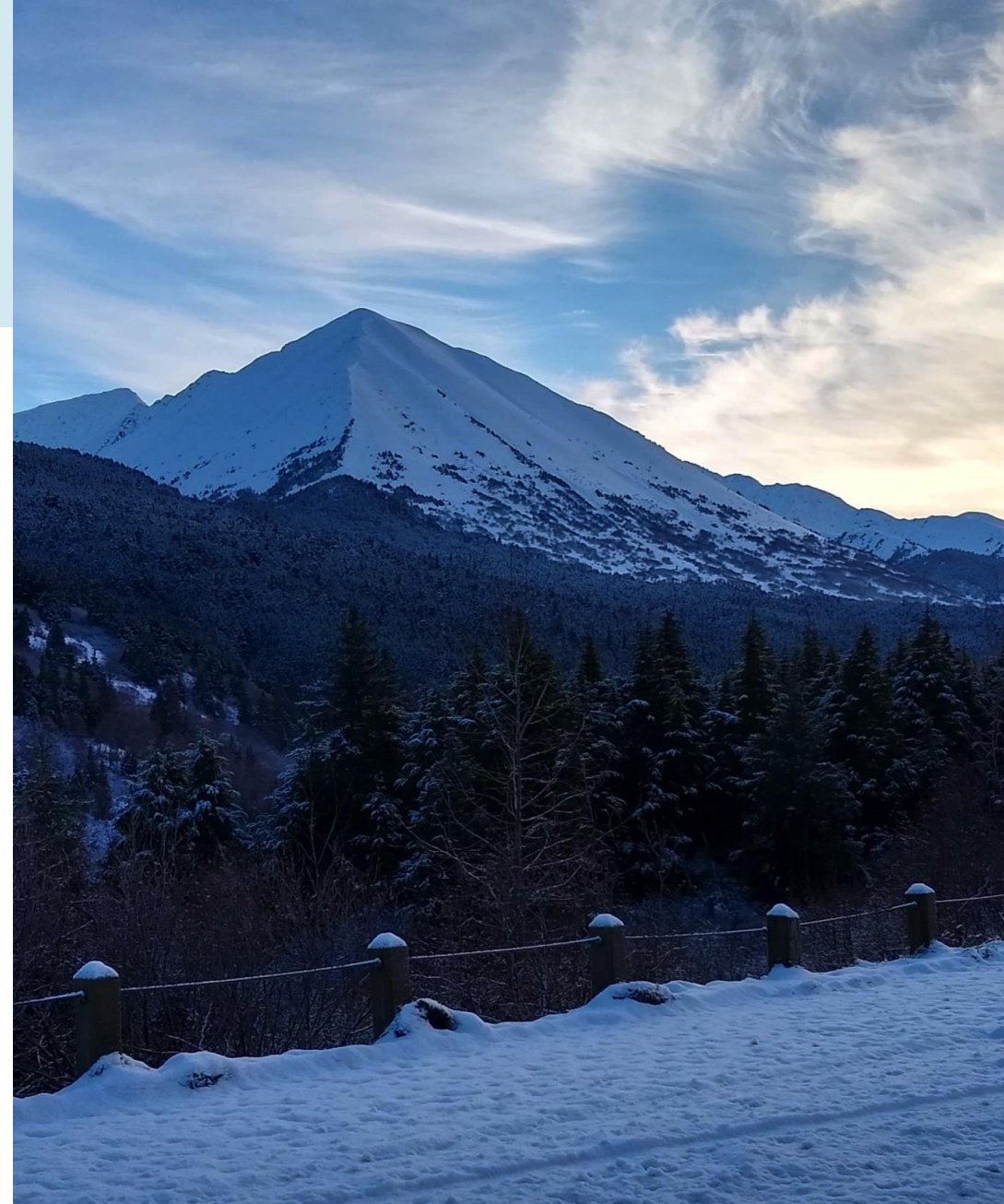
Essential Criteria continued:



- Proposals to alter the community landscape (i.e. installing signs, trails, etc.) must include letters of support
- Matching non-federal funding of at least half of total project cost committed (1:1 match)
- Document preservation/protection of historic resources via State Historic Preservation Office (SHPO)

Essential Criteria continued:

- Reasonable, feasible budget/schedule
- Plan to maintain improvements long-term for the benefit of the public
- Interpretive signage projects must be safely accessible by the public, and minimize impact on scenic resources.



Additional Considerations

Desirable, but not required:

- Encourage economic viability of the community and the region
- Employ local people
- Create new partnerships
- Over-matched by partnership funding (including in-kind)
- Involves and educates young people
- Expand and enhance a previous successful project



To apply:

<https://www.kmtacorridor.org/grants/>

Webinar recording available!

- Application Narrative
- Budget Worksheet
- Supplemental Items

Email to: katherineschake@kmtacorridor.org



Rotating mini-grants

1. School Field Trips:

Complement historical, anthropological, and geological curricula. KMTA offers field trip guide online.

Up to \$500

2. Community Training Scholarships:

Continuing education and training opportunities for community members within the Heritage Area (e.g. AK Trails Conference)

Up to \$350

<https://www.kmtacorridor.org/school-field-trip-mini-grants/>



How KMTA Can Work With You

- Apply for a KMTA Grant
- Discuss partnership opportunities with us
- Promote the historic nature of regional trails to users, residents, and businesses
- Sign up for KMTA's newsletter and social media
- Attend upcoming KMTA events:
August 17, Mineshaft Grinder in Hope
- Or just contact us! We love new ideas!



Thank You!

Lia Slemons
Trails Coordinator
liaslemons@kmtacorridor.org

