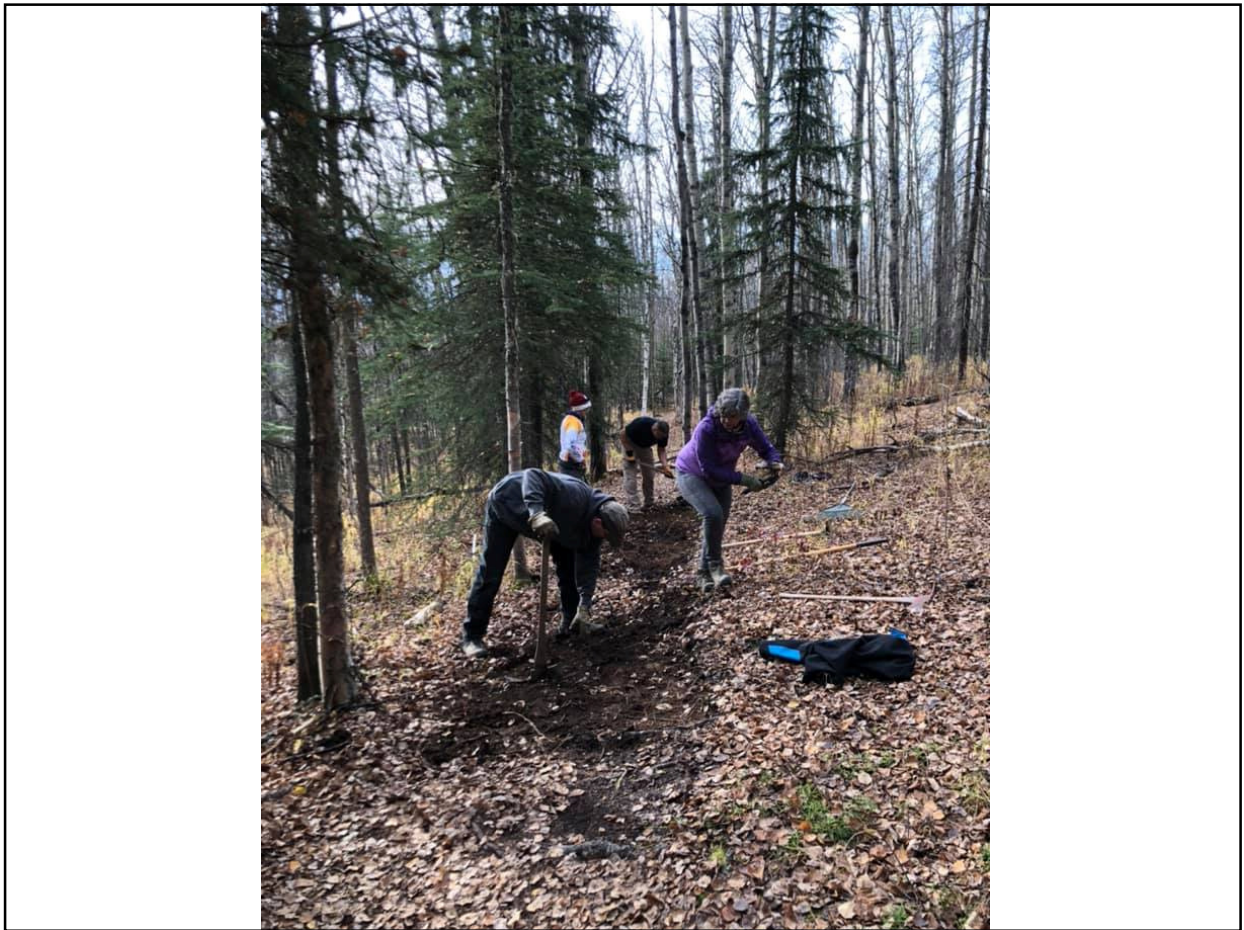


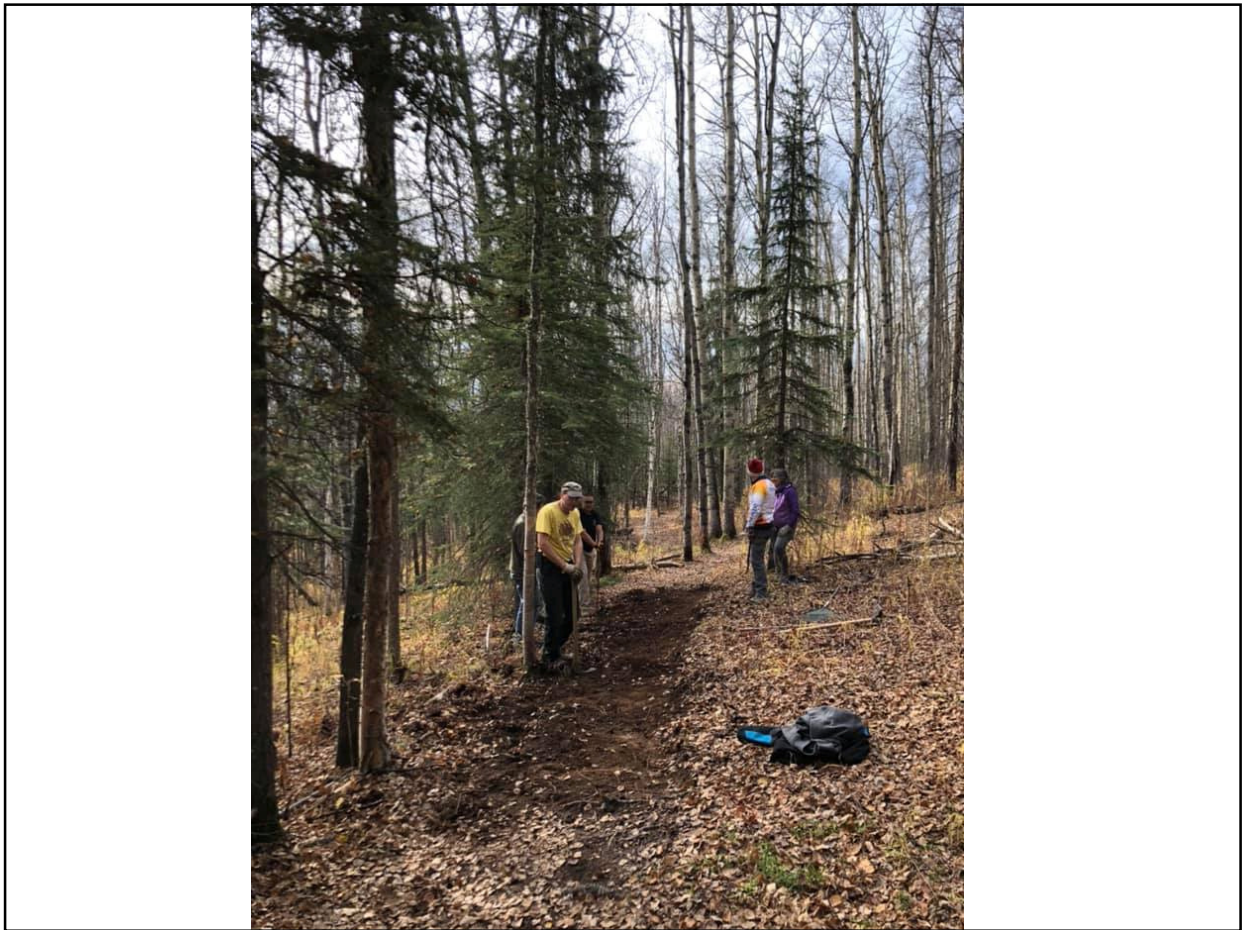


Interior Alaska Trails and Park
Foundation

- Relatively young organization... incorporated in 2018.
- 501(c)(3)
- The Interior Alaska Trails and Parks Foundation advocates to develop, maintain and promote a year-round trails and parks system for the greater Fairbanks area and beyond.
 - Multi-user!
 - FNSB boundaries & beyond!





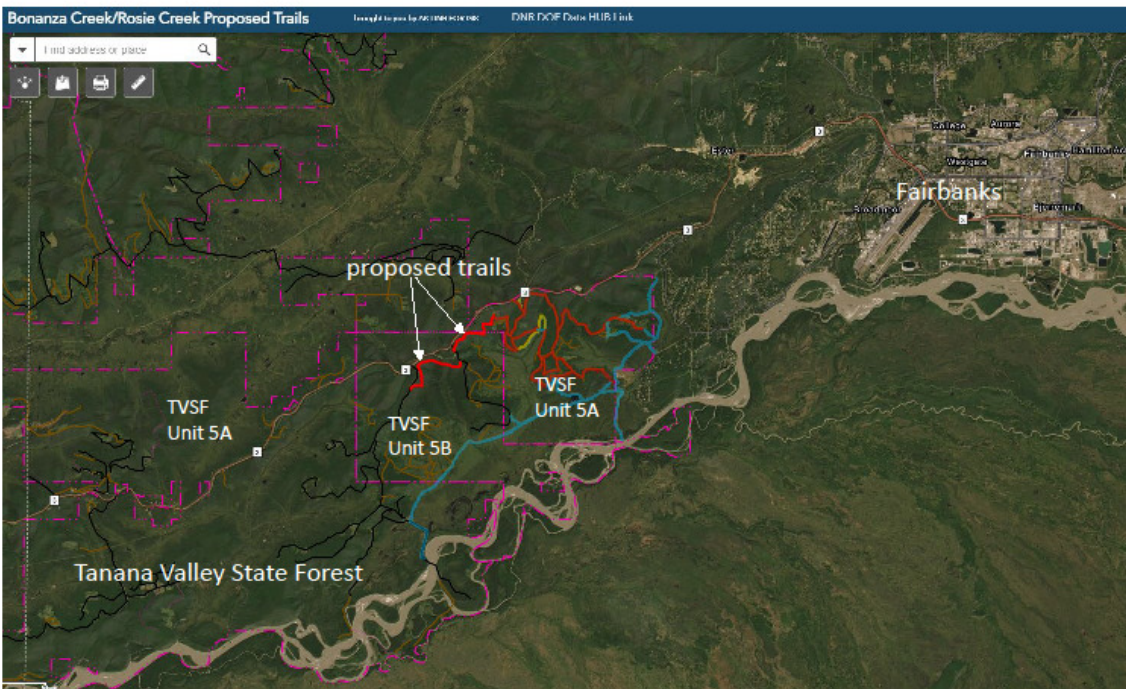






Other Activities...

- Acted as pass-thru funder for construction of a kiosk at a borough park
- Volunteer sessions on the Ester Dome Singletrack
- Partnering with Alaska Div of Forestry in the development of recreational multi-use facilities in the Tanana Valley State Forest



Tailgate Session

Overview

- Safety, Fun, Work
- Ensure all volunteers sign the "Volunteer Sign-In" sheet
- Quick introduction... any volunteers w/ special skills?
- Explain the project goals... hand finishing one mile of trail
- Where JonU is, what we've finished, how long of a hike in
- Project specific hazards... JonU

Job Hazard Analysis (JHA)

- Review all hazards
 - o falling trees, JonU

Personal Protection Equipment (PPE)

- Appropriate footwear, gloves, eye protection
- Hard hats, ear protection, insect repellent

Emergency Action Plan (EAP)

- Who is the assistant crew leader?
- Who to call in case of an emergency?
- Everyone has the crew leaders cell phone number?
- Where are the primary & secondary first aid kits
- Any medical conditions? bees, wasps? epi-pen, heart meds?

Carrying, Using, Storing, Safety (CUSS)

- Carry on the downhill side, sharp edges down... not over the shoulder & 2 tools max!
- Store tools up-slope side of the trail, sharp edges down
- Explain the McLeod, Pulaski, and loppers
- When working or hiking in, space 10' apart... "circle of death"
- Announce "passing", "swinging", "rock", etc
- Keep track of each other... no one goes MIA!
- Talk safety... Go/No Go
- Don't overwork... take breaks, swap jobs & hydrate
- No headphones or ear buds!
- Everyone has rain gear, food & water?

Mechanical Equipment... Trail Dozer & Mini-Excavator

Stay couple of hundred feet away from Jon and his crew. They can't hear you and are extremely focused on what they're doing. If you need to talk to him, approach from the front and wait till he acknowledges you and motions for you to come closer. Never get downhill from the equipment. Remember, the dozer and mini-ex both have a "circle of death".

Wrap-Up

- Flag session's end-point & pace off the distance finished
- Confirm all volunteers have returned to trailhead
- Record activity and production values... "Daily Activity Record"
- Clean & store tools, flag any tools w/ issues
- eblast to thank volunteers

- Record individual activity & equipment on the "Volunteer Record" sheet



Interior Alaska Trails and Park Foundation
P.O. Box 81147
Fairbanks, AK 99708
www.iatpfoundation.org