

Project Title: Alaska Trails - Alaska Long Trail - Ship Creek Trail "Arctic to Indian"

TPS Number: 68770

Priority: 3

Agency: Commerce, Community and Economic Development
Grants to Named Recipient (AS 37.05.316)

Federal Tax ID: 73-1677483

Grant Recipient: Alaska Trails

FY2025 State Funding Request: \$3,000,000

One-Time Need

Brief Project Description:

The 13.5-mile Ship Creek Trail will connect two existing trails -- the recently constructed Muktuk Marston Trail and the soon-to-be realigned Indian Valley Trail -- to complete a 25.1-mile section of the Alaska Long Trail from Turnagain Arm to north Anchorage. In addition to completing a braid of the Alaska Long Trail, completion of this missing section of trail will allow more users -- including visitors, but predominantly residents - to access the heart of Chugach State Park.

Funding Plan:

Total Project Cost:	\$3,000,000
Funding Already Secured:	(\$0)
FY2025 State Funding Request:	(\$3,000,000)
Project Deficit:	\$0

Detailed Project Description and Justification:

The Ship Creek Trail (identified in the Chugach State Park Trail Management Plan (TMP) as trail ID 304a) is a 13.5-mile trail which begins at the intersection with the recently completed Muktuk Marston Trail near Arctic Valley. The adjacent parking is one of the largest parking lots with access to Chugach State Park. The trail ends at the intersection with the Indian Pass Trail, 7 miles from Turnagain Arm offering connections to both Turnagain Arm via the soon-to-be rebuilt Indian Valley Trail or Glen Alps Trailhead via Ship Pass Trail. This trail provides critical access to the heart of Chugach State Park for visitors and residents. It also provides the final linkage in a 25.1-mile section of the Alaska Long Trail from Turnagain Arm to north Anchorage.

BENEFITS AND NEED

This trail will complete a needed and missing braid of the Alaska Long Trail, connecting Turnagain Arm to north Anchorage.

While the Arctic to Indian corridor is currently popular in winter with skiers, it is largely impassable in summer due to numerous creek crossings, dense vegetation, and challenging tread.

This project will also improve the ability of hikers, hunters, equestrians, and skiers to access the interior of Chugach State Park. While the perimeter of Chugach State Park is accessed by numerous trails, few trails access the interior of the park. Creating reliable year-round access will increase opportunities for hunting, camping, hiking, backpacking and more.

Project Timeline:

This project will be completed in with one season of layout and design (2025) and two field seasons for construction (2026-2027), pending final design and construction contractor availability.

Once funding is received, Alaska Trails, a statewide nonprofit, in partnership with Chugach State Park, will begin initial reconnaissance and assessment of the trail corridor. Subsequent design and layout by a qualified trail building contractor will follow initial assessment.

Entity Responsible for the Ongoing Operation and Maintenance of this Project:

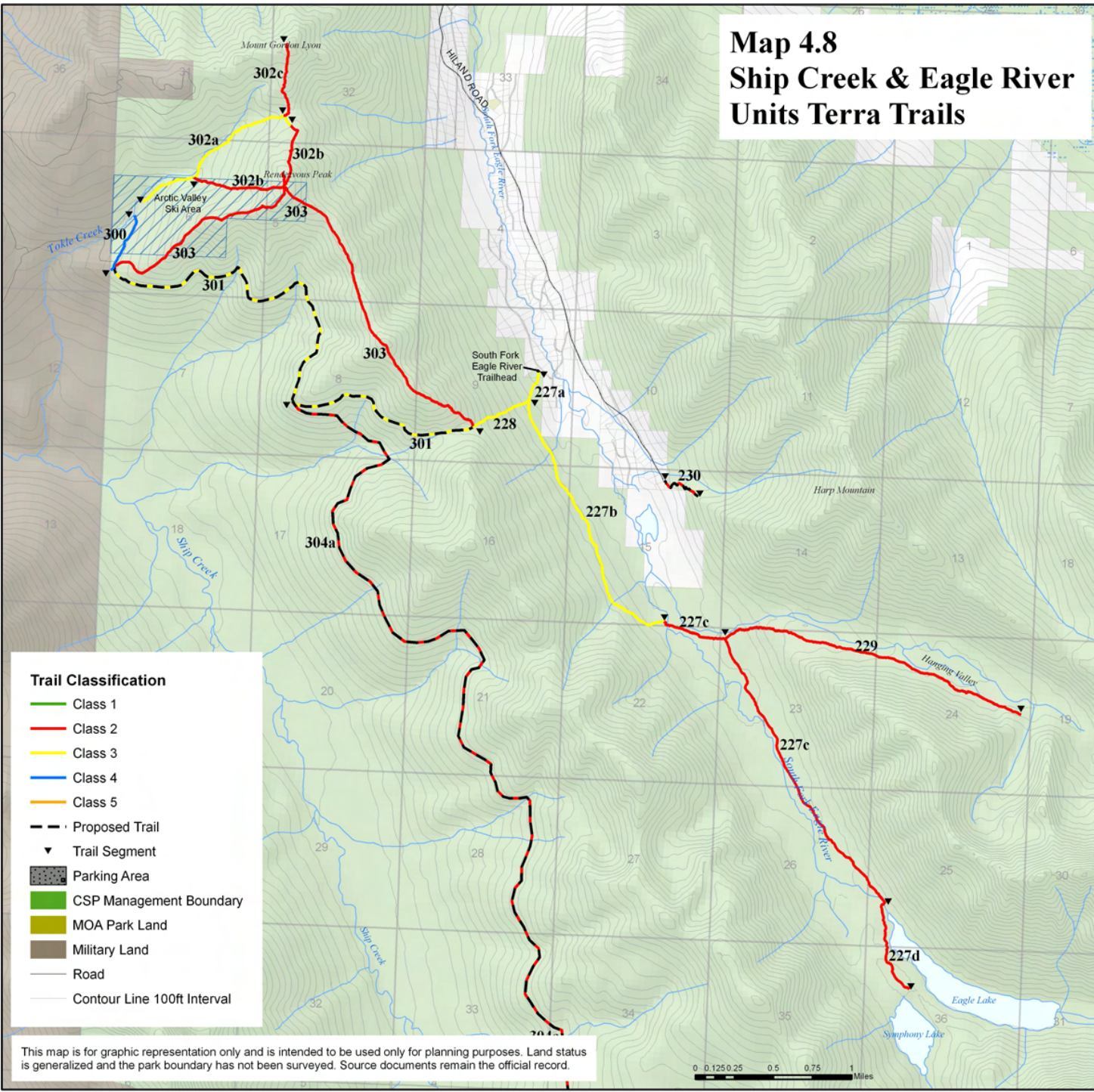
Girdwood Valley Service Area/MOA

Grant Recipient Contact Information:

Name: Steve Cleary
Address: PO Box 100627
Anchorage, AK 99587
Phone Number: (907)334-8049
Email: steve.cleary@alaska-trails.org

This project has been through a public review process at the local level and it is a community priority.

Map 4.8 Ship Creek & Eagle River Units Terra Trails



This map is for graphic representation only and is intended to be used only for planning purposes. Land status is generalized and the park boundary has not been surveyed. Source documents remain the official record.

