

# ALASKA LONG TRAIL



**ALASKA  
TRAILS**



# Alaska Long Trail Overview (concept)

## Long Trail Corridor\*

- Existing Trails
- Identified Gaps

## Land Ownership\*\*

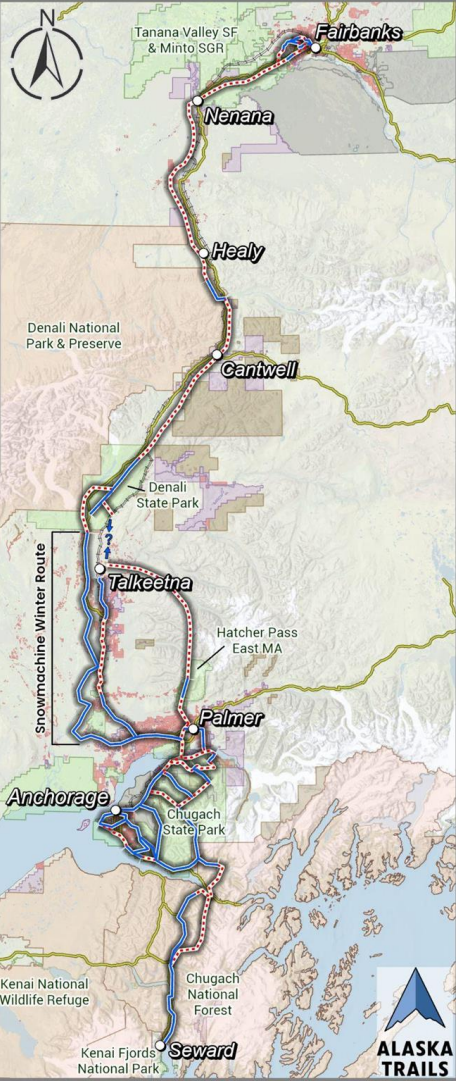
- Private
- State
- AK Native
- Federal
- BLM
- DoD

\*Corridor shown is simplified and may not reflect the alignment.  
**Existing:** existing ALT alignment and recommended trails.  
**Identified gaps:** concepts, gap, interim, and proposed projects.

\*\*Land ownership parcels within 25 miles of the Long Trail corridor  
**State:** parks, preserves, recreation, and special management  
**Federal:** parks, preserves, and forests

Credits: Alaska Trails, AKDOT, BLM, Esri, and Long Trail Coalition

0 25 50 75 Miles



# THE ALASKA LONG TRAIL VISION:

A world-class trail system connecting 500+ miles of Alaska's iconic terrain and diverse communities from the Pacific to the Interior, embracing the many ways Alaskans recreate outdoors and bolstering the Alaska economy by attracting visitors from all over the world.

NATURAL RESOURCE DEVELOPMENT | FRANCHISE FINANCING | ENERGY STORAGE

NOVEMBER 2023

# Alaska Business

ALASKA  
LONG  
TRAIL:

ONE  
STEP

AT A  
TIME

Martina  
Medvedev  
Alaska  
Copper  
Trail

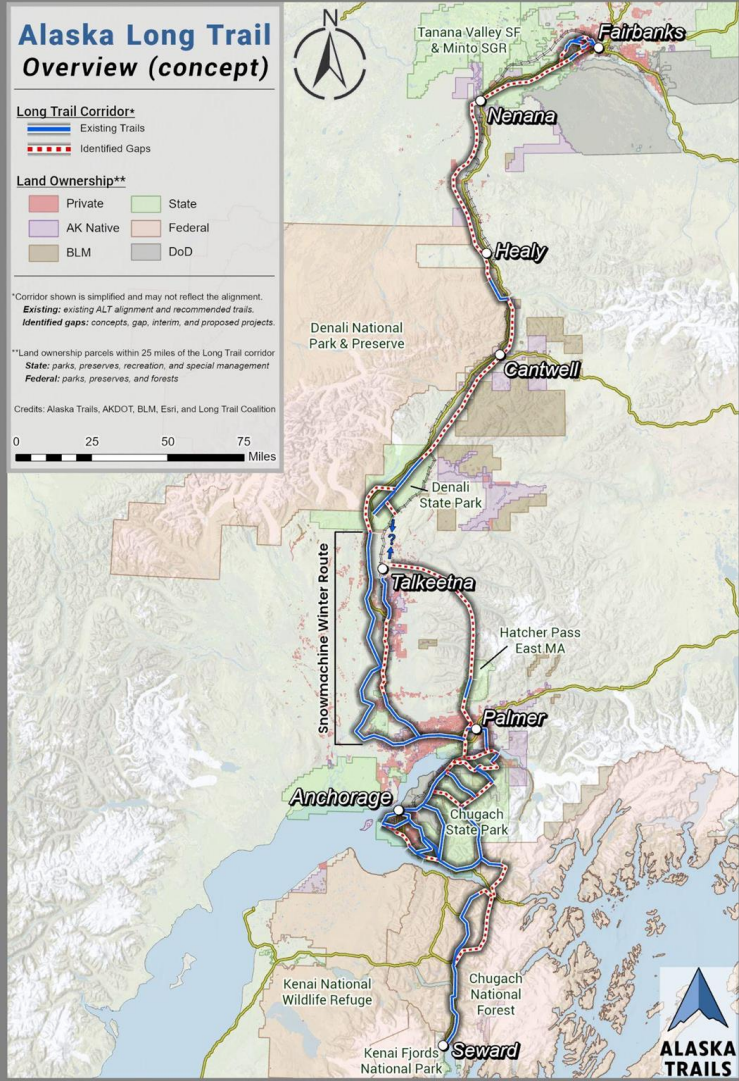
Haley  
Johnston  
Alaska  
Lease  
Trail



# ALASKA LONG TRAIL or ALASKA TRAVERSE?

Coordinating with the National Scenic Trail feasibility study





# 1. State Funding

**\$4.22M FY2023**

**\$1.4M FY2024**

# 2. Federal Funding

**\$11.27M FFY2022/2023**

---

**TOTAL: \$16.9M**

# Funded projects – state budget

---

## FY23

Anchorage to Mat-Su Reconnaissance Study	\$300,000
Wayfinding - Anchorage Moose Loop	\$800,000
Peters Creek Upper Trail & Bridge	\$30,000
Arctic to Indian Phase 1 Trail improvements	\$20,000
Turnagain Arm Trail Maintenance and Extension	\$370,000
Crow Pass - Eagle River	\$1,500,000
Glacier Creek Bridge - replacement for hand tram	\$1,200,000

## FY24

Eklutna Trailside Improvements	\$234,000
Ram Valley - Reestablishing Access	\$100,000
Indian Valley Trail Reroute	\$1,100,000

**TOTAL: \$5.62M**

**Funded projects – federal appropriations**  
**THANK YOU to Sen. Murkowski!**

---

FFY22

Chugach National Forest

\$5.77M

FFY23

Chugach National Forest

\$2.348M

Denali Borough – separated pathways Parks Hwy

\$2.18M

BLM – National Scenic Trail feasibility study

\$1M

**TOTAL: \$11.27M**

# SEWARD TO EAGLE RIVER

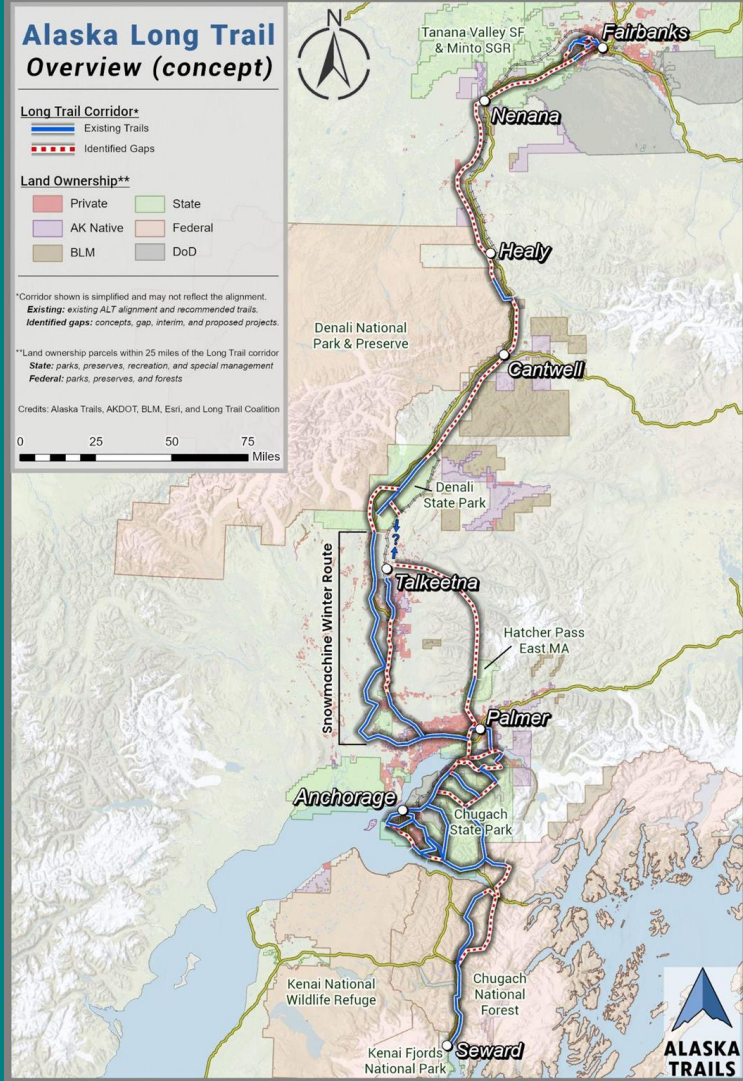
- Total length (approx): 167 miles
- On trail/pathway/sidewalk (approx): 117 miles
- Roads/Highway: 50 miles





# Planning north of Anchorage

- Chugiak to Palmer
- Palmer to Talkeetna
- Talkeetna to Denali State Park
- Denali State Park to Cantwell
- Cantwell to Healy
- Healy to Nenana
- Nenana to Fairbanks



# Plans for funding

---

**27 projects from Fairbanks to Anchorage**

**\$21M**

**Recipients:**

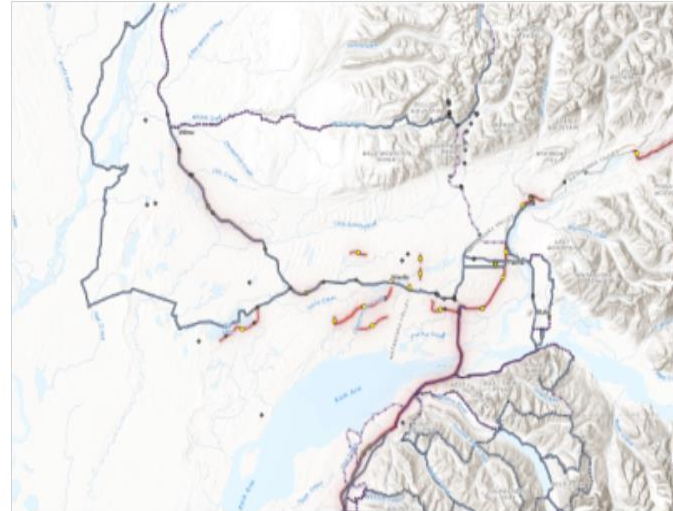
- **Boroughs**
- **State Parks**
- **Nonprofits**



# Explore the Alaska Long Trail



Alaska Long Trail Route Options



Alaska Long Trail with AKDOT STIP



# Alaska Long Trail Overview (concept)



## Long Trail Corridor\*

- Existing Trails
- Identified Gaps

## Land Ownership\*\*

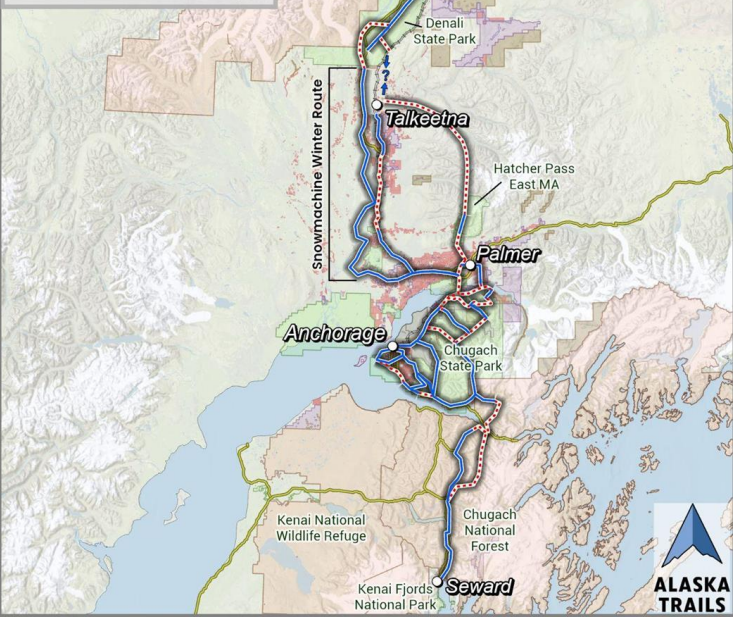
- Private
- State
- AK Native
- Federal
- BLM
- DoD

\*Corridor shown is simplified and may not reflect the alignment.  
**Existing:** existing ALT alignment and recommended trails.  
**Identified gaps:** concepts, gap, interim, and proposed projects.

\*\*Land ownership parcels within 25 miles of the Long Trail corridor  
**State:** parks, preserves, recreation, and special management  
**Federal:** parks, preserves, and forests

Credits: Alaska Trails, AKDOT, BLM, Esri, and Long Trail Coalition

0 25 50 75 Miles



# National Scenic Trail designation

11 NSTs nationwide

## Benefits

- Greater recognition and visibility
- Additional funding options
- Technical assistance from a variety of federal agencies



# ALASKA LONG TRAIL

Learn more and stay in touch!

[mariyam.medovaya@alaska-trails.org](mailto:mariyam.medovaya@alaska-trails.org)

[www.alaska-trails.org/alaska-long-trail](http://www.alaska-trails.org/alaska-long-trail)

