



*The*  
**WOLF  
PACK**

*Alaska*

# Our History

The Lake Louise Snowmachine Club (dba Wolf Pack) was formed in 1994 by founding member, Tree Farmer, as a way to streamline the area's grooming efforts. The Club's first duties were directed at helping the Copper Basin 300 Sled Dog Race with the Lake Louise portion of their race trails. Our responsibilities grew over the years as more volunteers and members helped the Club grow into a non-profit organization responsible for over 300 miles of winter trails in the Lake Louise and Copper River area.





# Our Mission

The maintenance, upkeep and grooming of the Lake Louise trail system by the Lake Louise Snow Machine Club (LLSMC) are essential for safety and community support. The efforts of club volunteers and in part, funds the LLSMC has received through the Alaska Snowmobile Trail Grooming Pool and the Matanuska Susitna Borough, has allowed for the maintenance (grooming) and trail marking of the many trails connecting the lakes within the Lake Louise area.



# Our Mission

The number one priority is to mark and maintain an inter-connected system of trails on the Lake Louise, Lake Susitna and Tyone Lake areas. This area is noted for extreme ice fog and blowing snow during the winter months.

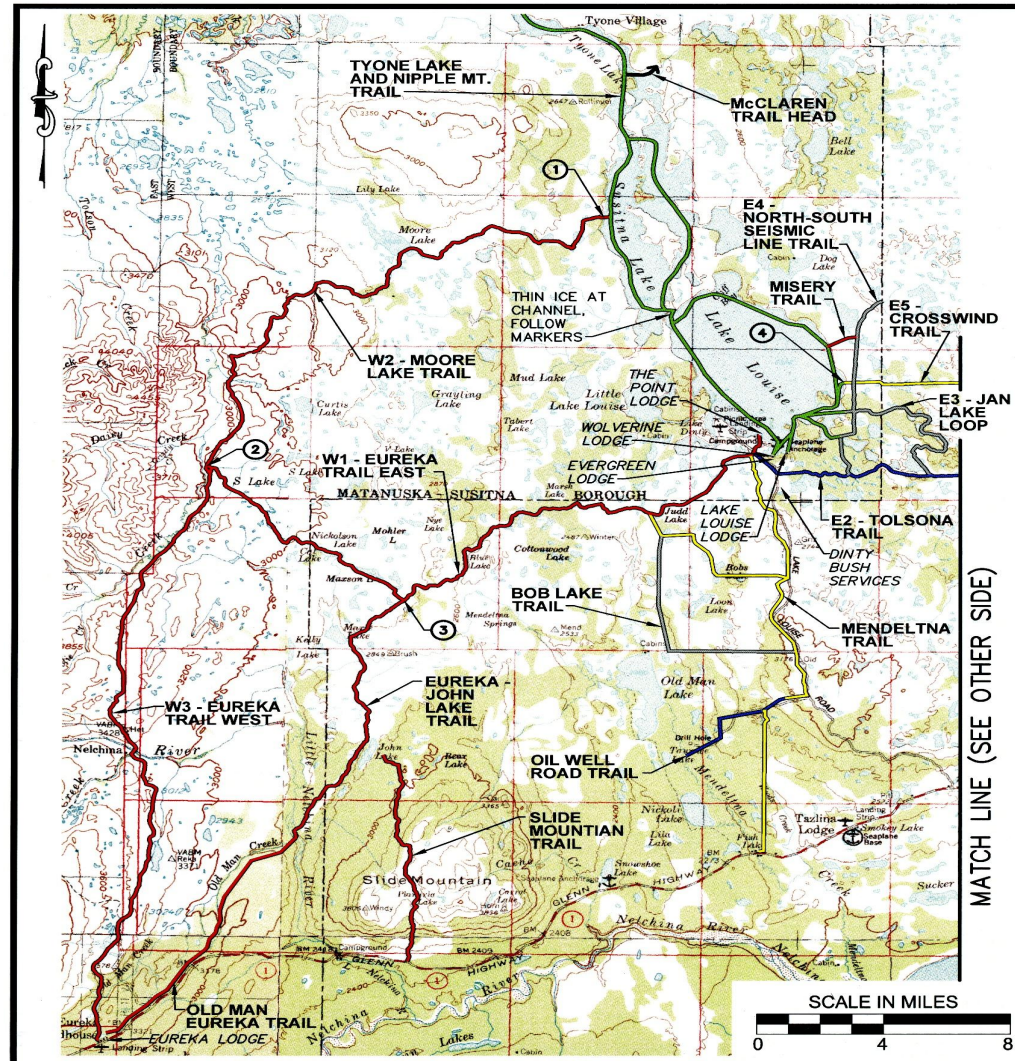
In addition to providing access to cabins and homes and for enhancing recreational activities, the most important need for these trails are for emergency purposes.

These trails provide a much safer and faster conduit for emergency personnel to respond to an incident or condition that threatens life or safety.

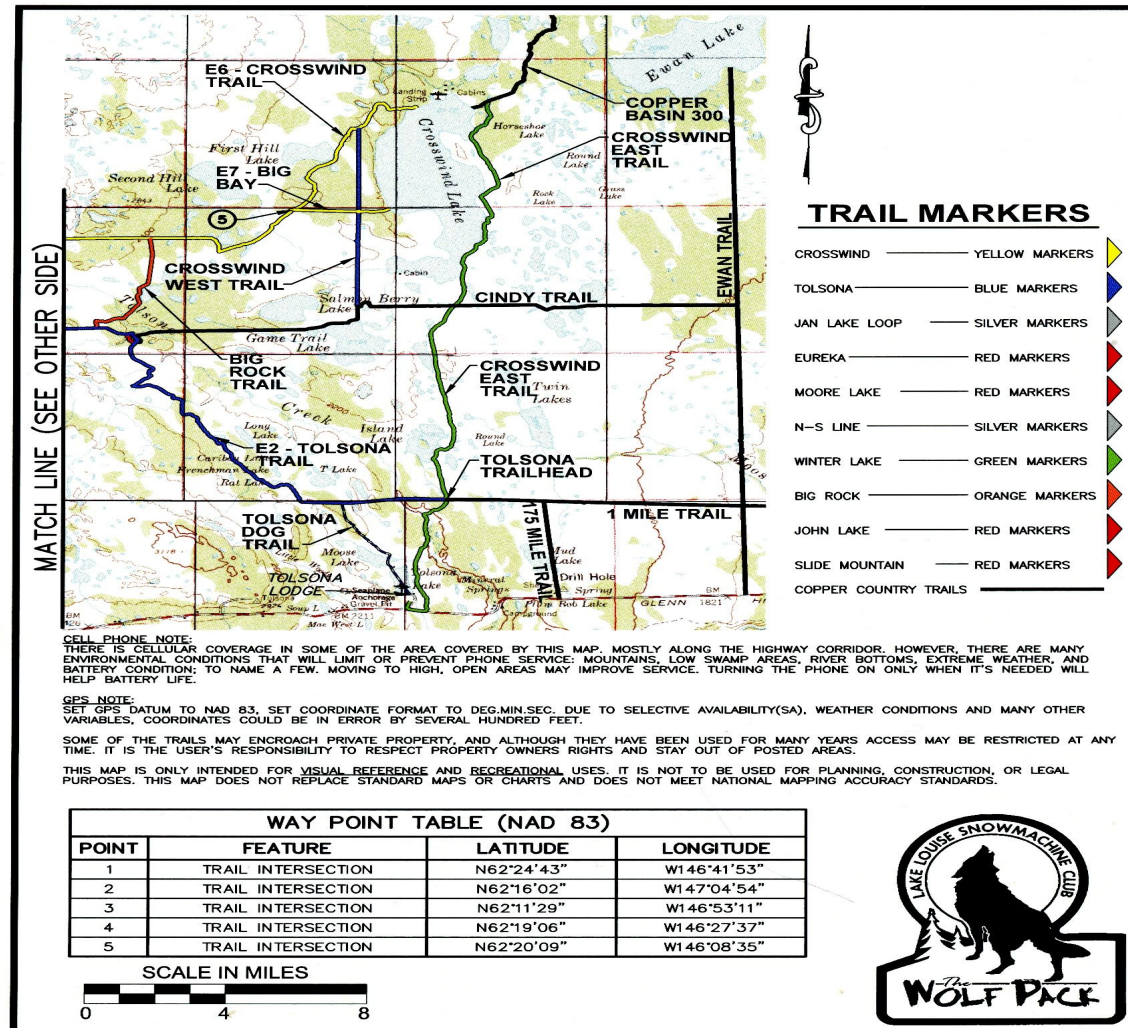




# Lake Louise Snowmachine Club Trails



# Lake Louise Snowmachine Club Trails



# Lake Louise Snowmachine Club

## Nine Member Board

**Harry Holt**, President

**Mike Andersen**, Vice President

**Garth Massay**, Treasurer

**Eric Carlson**, Secretary

**Randy Arndt**, Director

**Peter Probasco**, Director

**Dustin Overturf**, Director

**Brian Wallow**, Director

**Earle Williams**, Director



# Challenges





# Challenges



# Supporting a wide variety of uses

Our winter use trails support a number and growing outdoor recreational activities to include snowmachining, dog mushing, cross country skiing, fat-tire biking, snowshoeing, and skijoring. These trails also provide access to popular ice fishing and hunting opportunities





# Project Success!!

In 2021, the Lake Louise Snowmachine Club embarked on a new project, called PROJECT WOLF TRACKS to raise funds for the purchase of a groomer to replace the 1986 B2000 Tucker Sno-Cat which was no longer reliable and very expensive to maintain. Our efforts in securing funding were successful and in November of 2023 we took ownership of a brand new Pisten Bully 100.



# 2024 Fun Events

Trail Marking Party

Super Bowl Weekend

Bully Fest

Sweet Heart Fun Run

LLSMC Fun Run and Basket Auction

Spring Fun Run

Antique Sleds Event and Fun Run

Curling

I invite you to come join us and check out our web-site

<https://lakelouisesnowmachineclub.com>





TIME TO RIDE

Thank you!

