



KENAI MOUNTAINS-TURNAGAIN ARM

NATIONAL HERITAGE AREA

**OVERVIEW AND UPDATES
PRESENTATION**

2023

LAND MANAGERS FORUM

Rachel Blakeslee, KMTA Executive Director

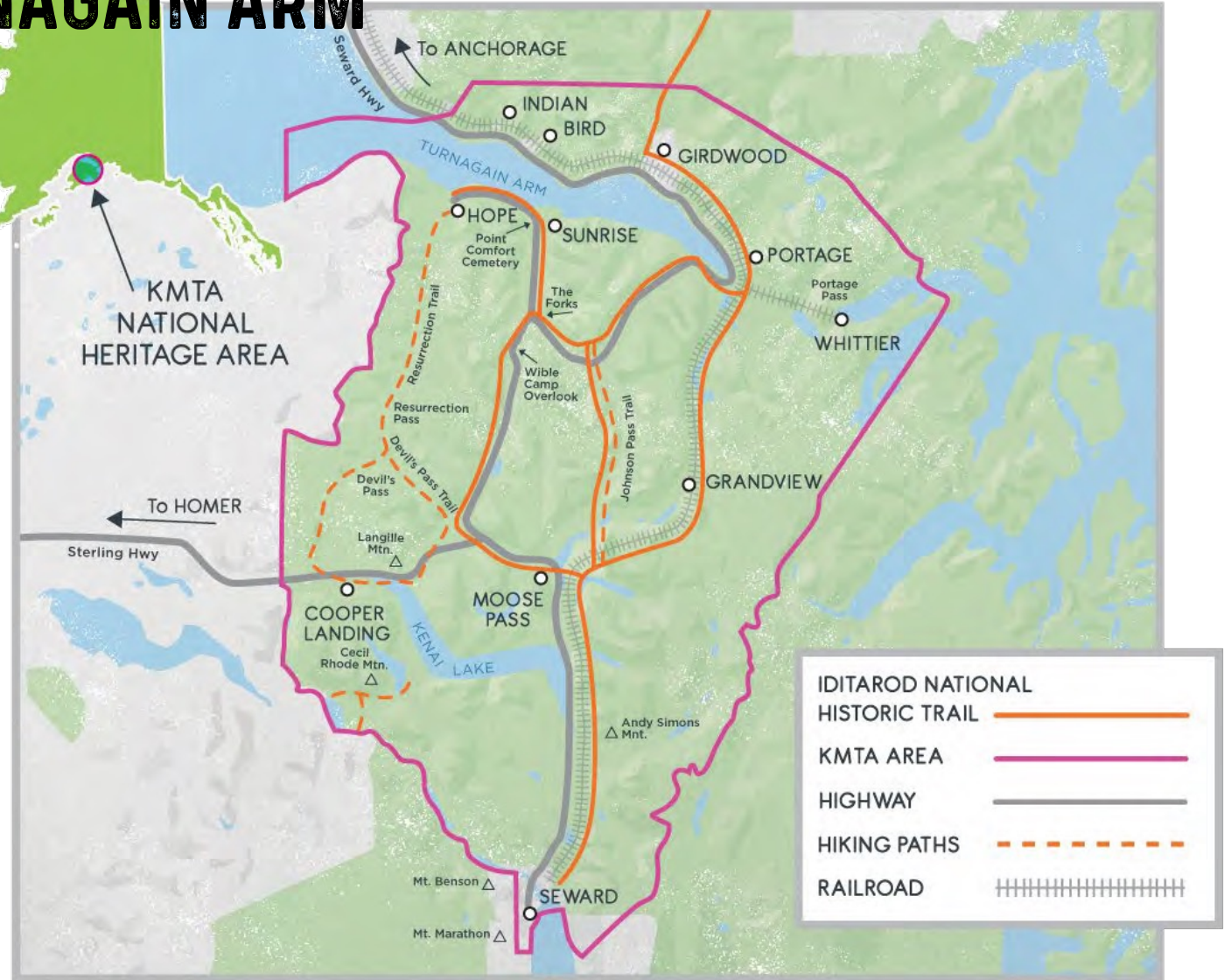
November 2023



THE KENAI MOUNTAINS–TURNAGAIN ARM NATIONAL HERITAGE AREA

Established in 2009, the Kenai Mountains-Turnagain Arm National Heritage Area includes parts of:

- ▲ Chugach State Park
- ▲ Chugach National Forest
- ▲ Kenai Fjords National Park
- ▲ Includes the communities of Indian, Girdwood, Portage, Whittier, Hope, Moose Pass, Seward and Cooper Landing
- ▲ Most of the INHT Southern Trek



WHAT WE ARE ABOUT

PRIDE OF PLACE
AND AN ENDURING
STEWARDSHIP ETHIC

MISSION

As the nonprofit tasked with stewarding Alaska's only National Heritage Area, our mission is to enhance, preserve and share KMTA's natural and cultural resources- in essence, our heritage.

VISION

To discover, preserve, and enable the unique relationships between the communities, resources, and landscape of the Kenai Mountains-Turnagain Arm National Heritage Area.



KENAI MOUNTAINS- TURNAGAIN ARM CORRIDOR COMMUNITIES ASSOCIATION

KMTA CCA is a 501 (3) non-profit organization to preserve, protect, and promote the historical, cultural, natural, and recreational assets of the National Heritage Area

PROGRAM AREAS

Outdoor Education

Recreation Events

Grants Program



OUTDOOR EDUCATION



ALASKA OUTDOOR SCHOOL

Three day, two-night program in Portage; serves 5th graders; exposure to public lands career pathways, outdoor skills natural and cultural history, science, recreation, and SEL



COASTAL CONNECTIONS

Seward-based day program model; 5-day sessions; exploration of local coastal ecosystems and marine ecology



FRESH AIR FRIDAYS

Outdoor adventure, art, science, and recreation on school in-service days and holidays; serves KMTA kids; rotating locations



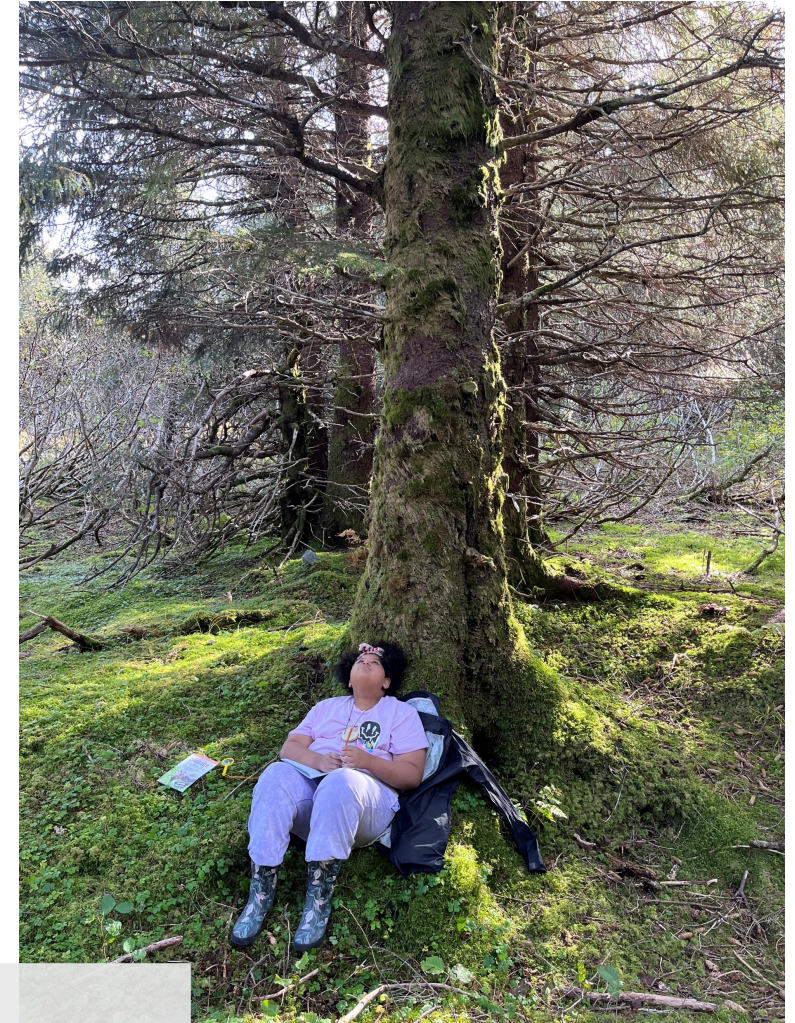
SNOWSCHOOL

Connects students to winter outdoor heritage with experiential learning that aligns with concepts learned in school; winter recreation; focus on ecological role of snow science and watersheds



PATHFINDERS

New FY24 pilot; connecting kids to trails and forests



OUTDOOR EDUCATION IMPACT

LAST YEAR'S IMPACT AT A GLANCE [2022-2023]

67

Program Days
Provided

358

Kids Served

14

Schools Engaged
(ASD & KPBSD)

7

Communities
Reached

THIS YEAR'S PROJECTED IMPACT [2023-2024]

130

Program Days
Planned

500

Est. Kids
Served

14

Est. Schools
Engaged (ASD &
KPBSD)

7

Est. Communities
Reached



RECREATION EVENTS



GRANTS PROGRAM

\$1,473,782

Awarded to Date

\$129,563

Awarded in FY23

\$413,431

Invested in Trail
Projects

197

Projects Supported

\$2,742,252

Match Produced



FOCUS AREAS

- ▲ Historic and Cultural Preservation
- ▲ Natural Resource Conservation
- ▲ Trails and Recreation
- ▲ Education and Interpretation
- ▲ Publication and Arts



UPDATES AND CHANGES ON THE HORIZON

- 🌲 USFS Partnership Agreement
- 🌲 NPS OASLC Partnership Agreement
- 🌲 Van Pursuit and Hiring
- 🌲 Strategic Planning
- 🌲 Backcountry Film Festival-Sitzmark, Dec 6th
- 🌲 Photo Contest- Accepting Submissions through Dec 4th





KENAI MOUNTAINS-TURNAGAIN ARM

NATIONAL HERITAGE AREA

QUESTIONS?

Contact:

rachelblakeslee@kmtacorridor.org

713-376-7070

