

TRAILS AS TRANSPORTATION

Sharing, separating, and integrating.



Matt Steffy
Parks & Trails Planner
City of Homer, AK

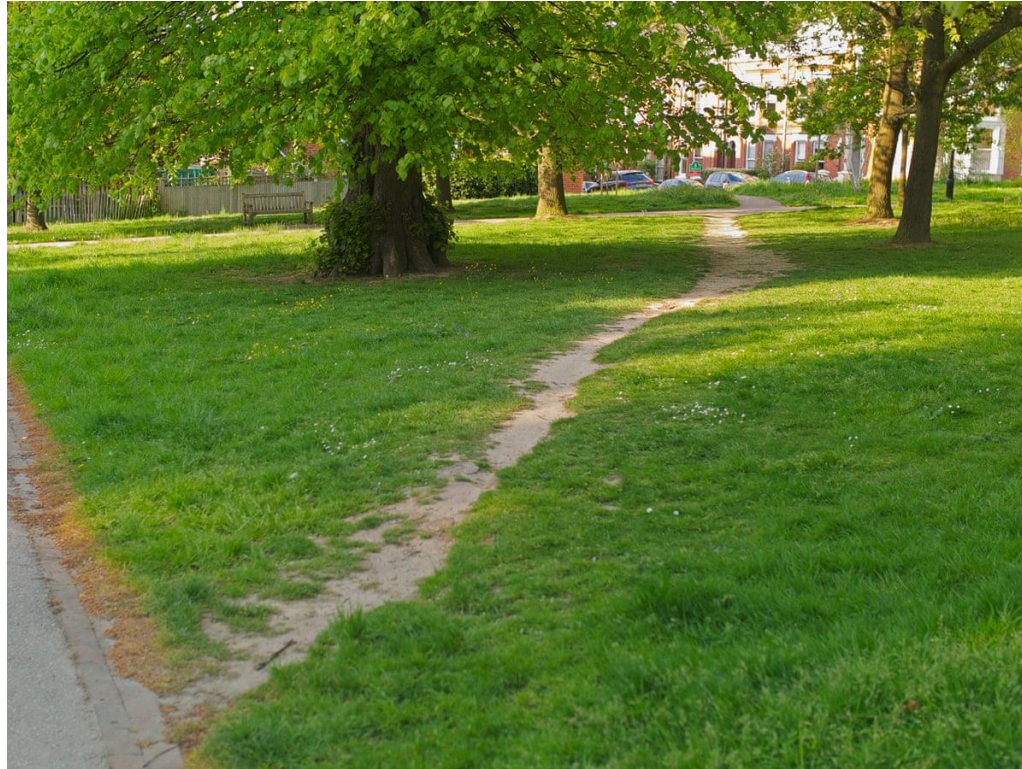
TRAILS AS RECREATION

- Loop Trails
- Recreation Destination Trails
- Indirect Route Trails
- Lunch Time Trails



TRAILS AS TRANSPORTATION

- Short Cuts



TRAILS AS TRANSPORTATION

- Short Cuts
- Park Crossings

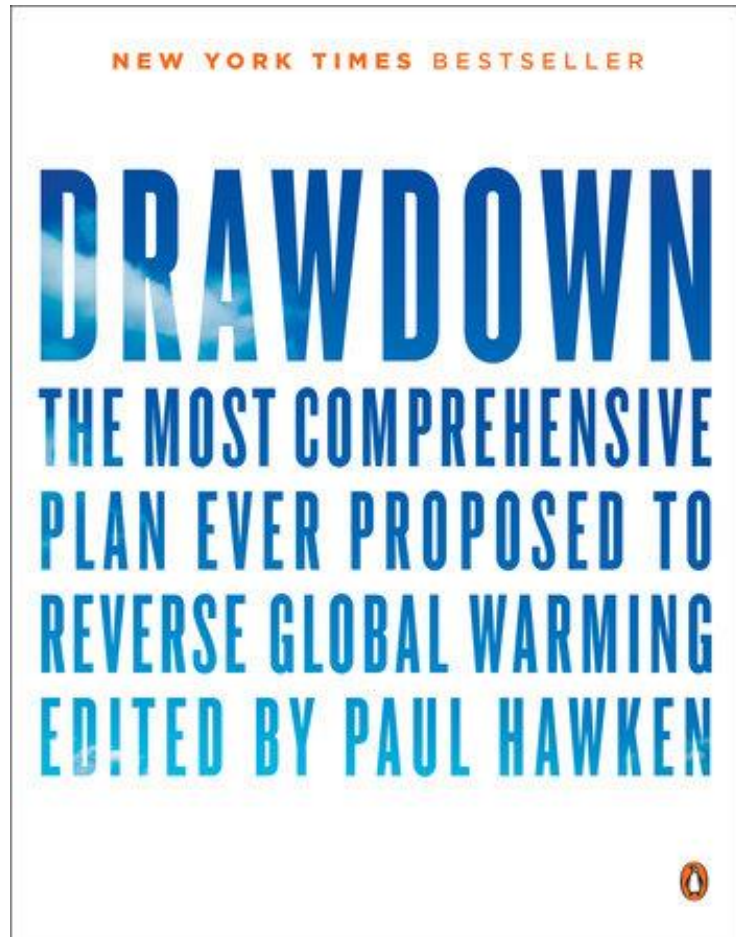


TRAILS AS TRANSPORTATION

- Short Cuts
- Park Crossings
- Legal Easements



DRAWDOWN: WHAT CAN EVERYONE DO OR STOP DOING OR DO MORE OF OR MAYBE TALK TO THEIR COUSIN ABOUT WHAT HER FAMILY IS DOING?



- **New York Times Bestseller**
- *“This is the ideal environmental sciences textbook—only it is too interesting and inspiring to be called a textbook.” —Peter Kareiva, Director of the Institute of the Environment and Sustainability, UCLA*



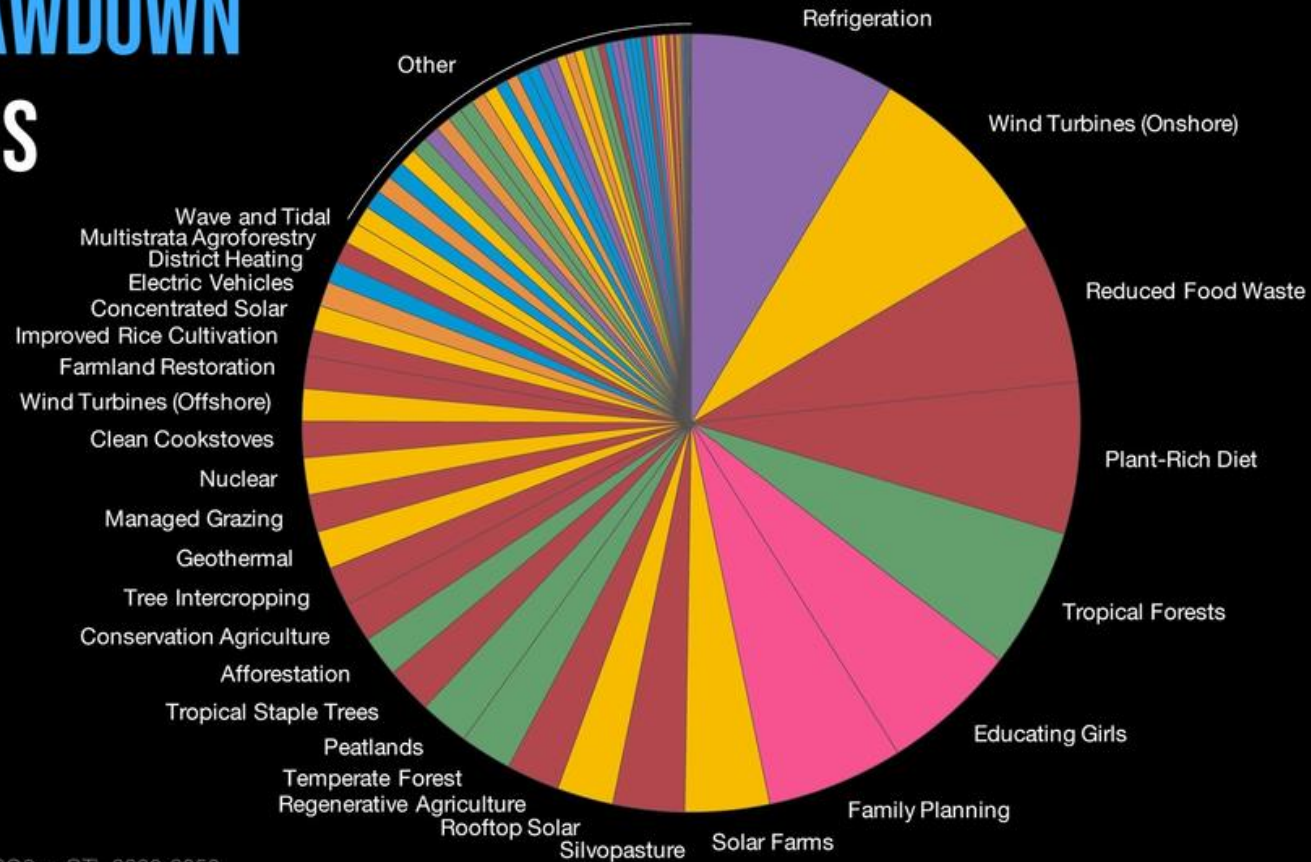
PROJECT DRAWDOWN®

PROJECT DRAWDOWN 80 SOLUTIONS

CO₂-EQ: 1,035 GT

COST: \$29.6T

SAVINGS: \$74.4T



Ranked by potential emissions reduction (CO₂eq GT), 2020-2050, as modeled in Project Drawdown's Plausible Scenario (2017).

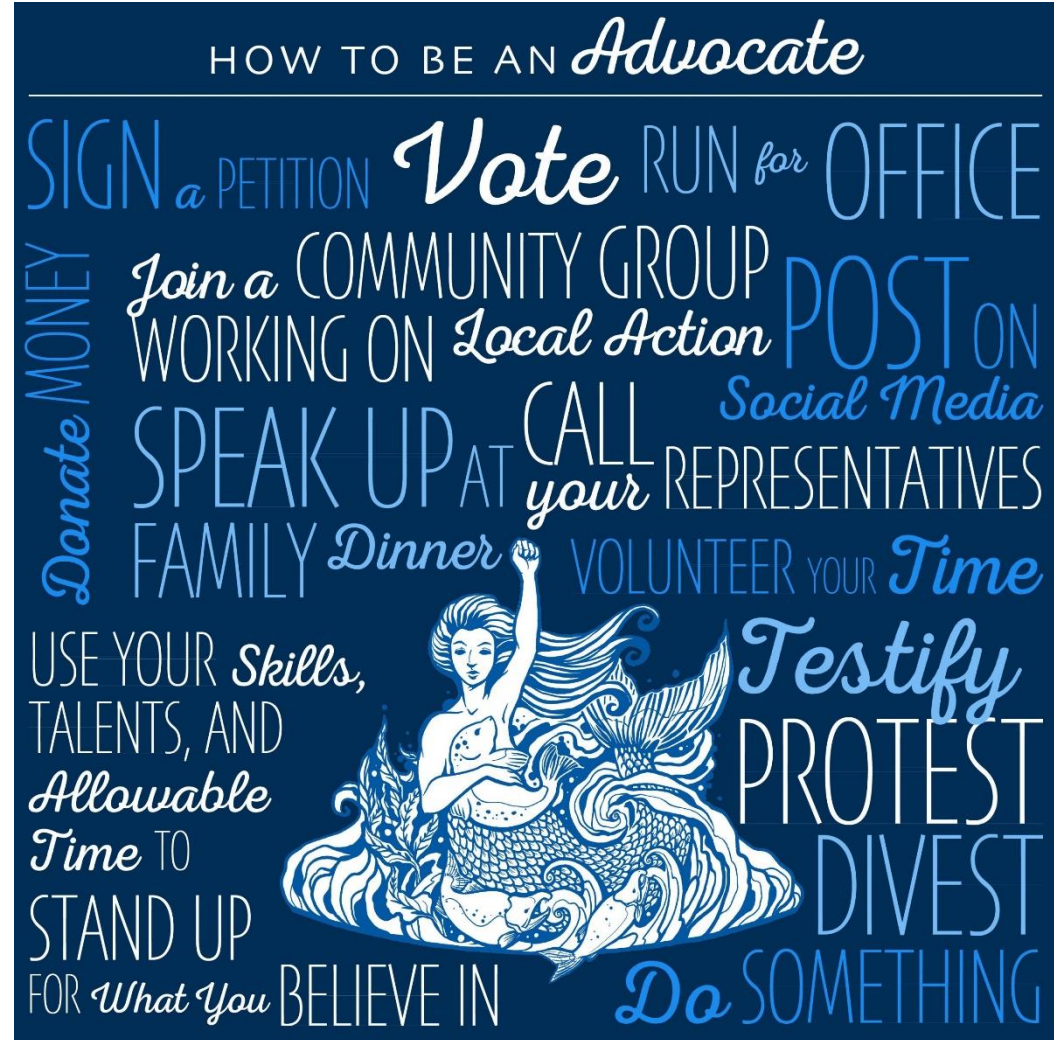


COOK INLET KEEPER



COOK INLET KEEPER

- Started in 1994
- Vast array of protections
- Water quality monitoring
- Vegetation modeling
- Species population monitoring
- Vessel traffic
- Seismic Testing
- Present McRib Status
 - McRib forecasting



SOUTHERN PENN



HOMER DRAWDOWN
OUR CLIMATE SOLUTIONS



SOUTHERN PENINSULA INITIATIVE?



SOUTHERN PENINSULA INITIATIVE?

- Peatlands



SOUTHERN PENINSULA INITIATIVE?

- Peatlands
- The piggy bank of our carbon sequestration future!
- 3% of earth's surface
- 2nd only to oceans
- Twice the amount in all forests



A LOT OF INFO STILL BEING GATHERED IN PEATLANDS ASSESSMENTS

- Ground water monitoring.
- In-field turbidity monitoring stations [whoa]
- Potential acquisition of land for preservation.
- Fundamental component of the City's Green Stormwater Infrastructure



SELECTING PROJECT NUMBER TWO

- Non-motorized Transportation
- Community Composting
- Local Food Preservation
- Climate Smart Homer Homes

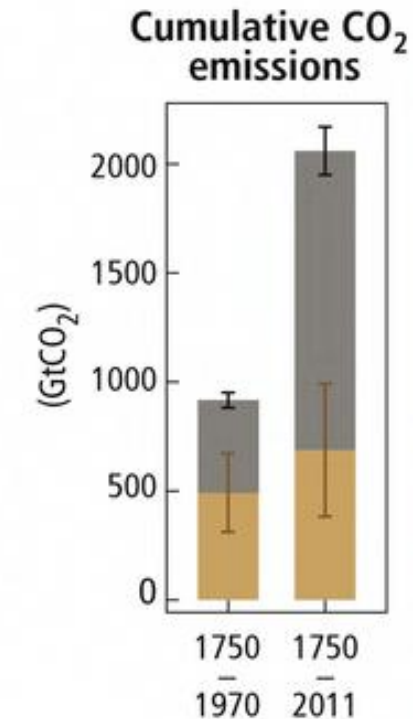
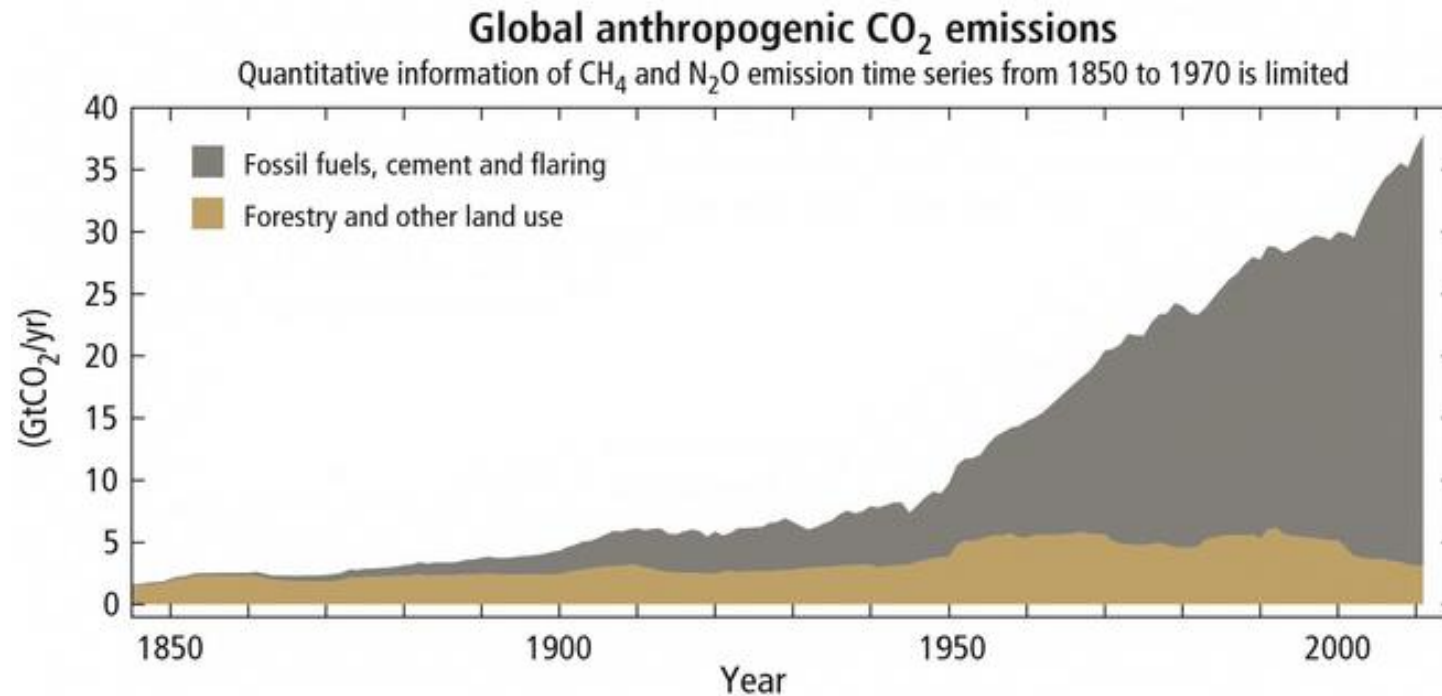


NON-MOTORIZED TRANSPORTATION



NON-MOTORIZED TRANSPORTATION

- 5% increase in commuters who walk instead of drive Saves 2.3 Gigatons
- 2% increase in commuters who bicycle instead of drive Saves 1 Gigaton



DRAWDOWN: WHAT CAN WE DO NOW?

- What will the focus be in Homer, Alaska



Infrastructure

Behavior

Policy



DRAWDOWN: WHAT CAN WE DO NOW?

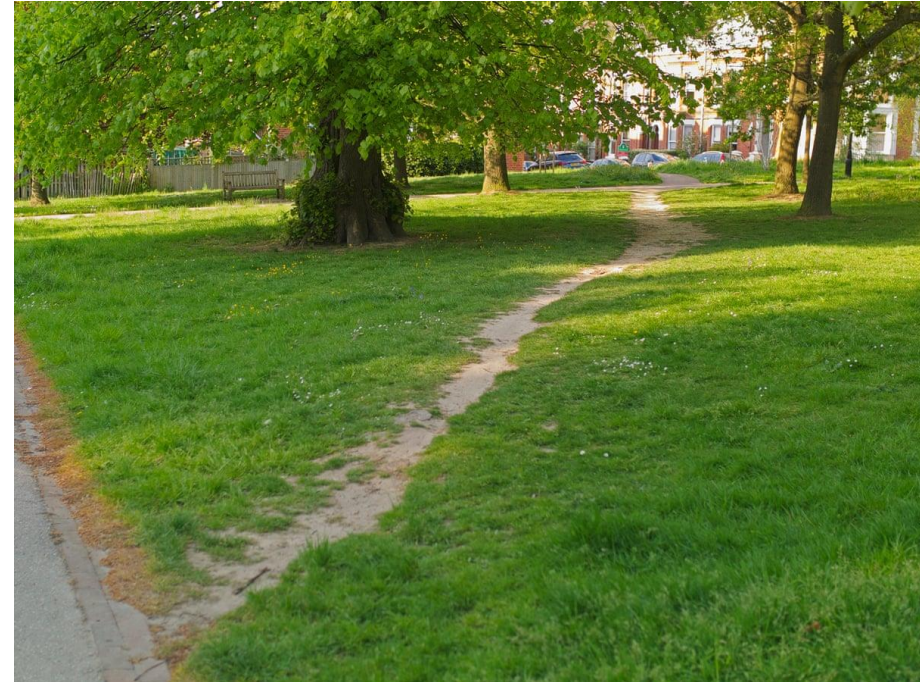


DRAWDOWN: WHAT CAN WE DO NOW?



DRAWDOWN: WHAT CAN WE DO NOW?

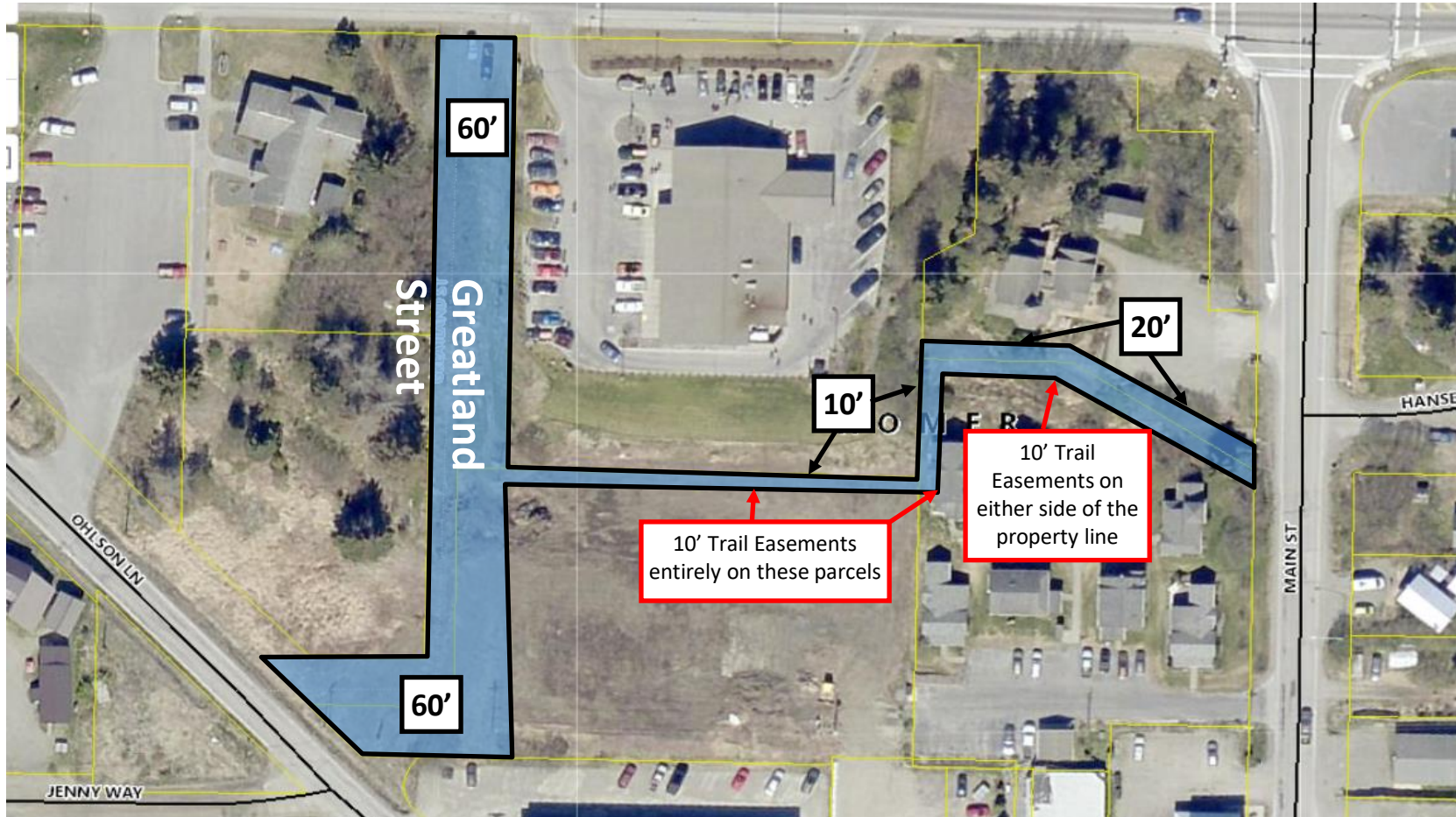
- Where do people naturally want to go?



DRAWDOWN: WHAT CAN WE DO NOW?



DRAWDOWN: WHAT CAN WE DO NOW?



GET OUR HANDS DIRTY?



© Bjørn Olson



GET OUR HANDS DIRTY?



WHAT ABOUT BEHAVIOR?

- Homer Shares the Road
- Not all individuals follow rules
- Safe routes need to be defined
- Encouraging Programs
- Training
- Special events



WHAT ABOUT POLICY?

- Zoning
 - Platting
 - Inspection
 - Compliance
- Develop as a community into a future that considers all levels of growth and preserves our potential resources, our shared space, and our precious opportunities.



TRAILS AS TRANSPORTATION

Matt Steffy – City of Homer – Parks and Trails Planner

907-399-1437

msteffy@ci.homer.ak.us

