



Jeff Kish - National Scenic Trail Designation

Jeff Kish

- **Executive Director of the Pacific Northwest Trail Association (PNTA) since 2016.**
- Pacific Northwest National Scenic Trail Advisory Council (PNNSTAC) - Member, 2015-2024
- Partnership for the National Trails System (PNTS) Advocacy & Policy Committee - Member, 2024.
- American Long Distance Hiking Association-West - Board Member, 2016-2018
- PNT Thru-Hike - 2014
- PCT Thru-Hiker- 2012





Construction and Maintenance



Trail Information

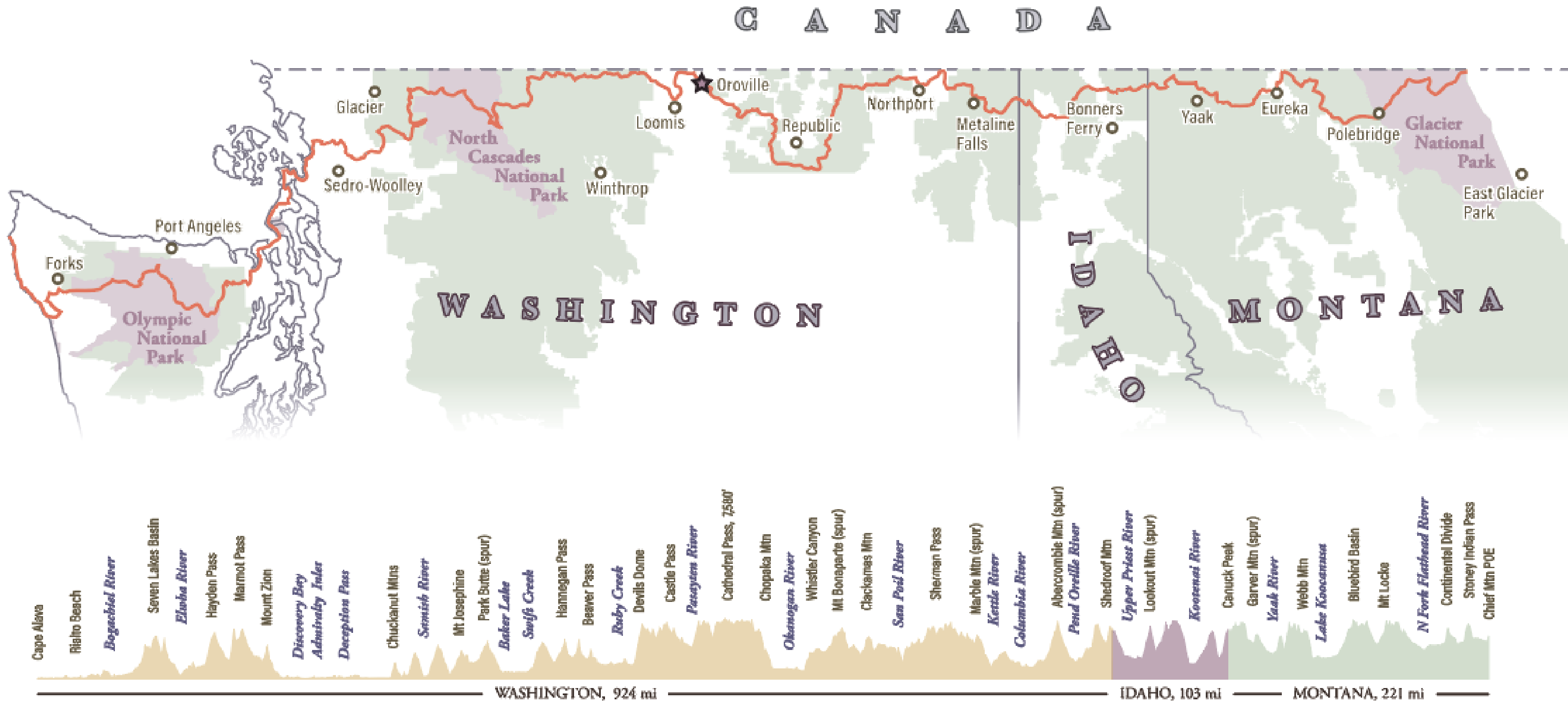


Advocacy and Planning



Education and Interpretation

Map of the Pacific Northwest National Scenic Trail



Feasibility Studies

The value of a feasibility study is proportionate to its quality.

- Does the study have the required specificity?
- How does bias affect outcomes? Is the timing right to get the necessary buy-in?

A favorable feasibility study outcome does not guarantee a trail will be designated. But it helps....

An unfavorable feasibility study outcome does not prohibit a trail from being designated. But it hurts...

Where there is a will, there's a way.

- Ultimately, designation remains up to congress.

What happened with the PNT?

“the study determined that a Pacific Northwest Trail would have the scenic and recreational qualities needed for designation as a National Scenic Trail, but concluded that its construction was neither feasible nor desirable and recommended the "no trail" alternative.”

In arriving at this recommendation, the study found that:

- “ little new recreation opportunity would be provided if a trail were constructed since extensive trail systems already exist throughout most of the study area;
- that the cost of land acquisition and construction would be excessive . . . in comparison with the benefits which would result;
- that there would be significant adverse environmental impacts on the grizzly bear and on fragile and frequently over-utilized high elevation areas.”

PACIFIC NORTHWEST TRAIL

A REPORT BASED ON A JOINT STUDY

BY THE

FOREST SERVICE

AND

NATIONAL PARK SERVICE



June 1980



How did it go so wrong?

The feasibility study lacked necessary specificity....

“Because no specific location for a Pacific Northwest Trail was contained in Public Law 90-543, 3, as amended, . . . it was infeasible during the study to identify the precise location of suggested routes.”

“corridors 6-miles wide encompassing the suggested routes were used.”

...and left too much room for bias and assumptions

Without a specific route identified for the trail location, the authors of the PNT feasibility study made predictions about costs and environmental impacts based on the assumption that an entirely new trail would be constructed.

In truth, the proposed route utilized largely pre-existing infrastructure.

PACIFIC NORTHWEST TRAIL

A REPORT BASED ON A JOINT STUDY

BY THE

FOREST SERVICE

AND

NATIONAL PARK SERVICE



June 1980





29 years later.

Benefits of National Scenic Trail Designation

“Fame and fortune and everything that goes with it!”

- New sources of funding?
- Recognition?
- Technical assistance?
- Protections?

The truth is: it depends.

Designation offers few *guarantees*, but many *opportunities*.

The rest is up to you.



A group of four workers in safety gear are building a dirt trail on a steep, rocky mountain slope. The workers are using tools like pickaxes and shovels. The background shows a dense forest of evergreen trees and a mountain range under a clear sky. A semi-transparent dark box with white text is overlaid on the upper right portion of the image.

How does the Trail Corridor develop after designation?

Comprehensive Plan

- Required within two complete fiscal years of of designation, unless otherwise specified
- Requires the participation of a Federal Advisory Committee Act (FACA) committee

Pacific Northwest National Scenic Trail

Comprehensive Plan

Prepared by:

USDA Forest Service
Pacific Northwest Region
Portland, Oregon

Approved:

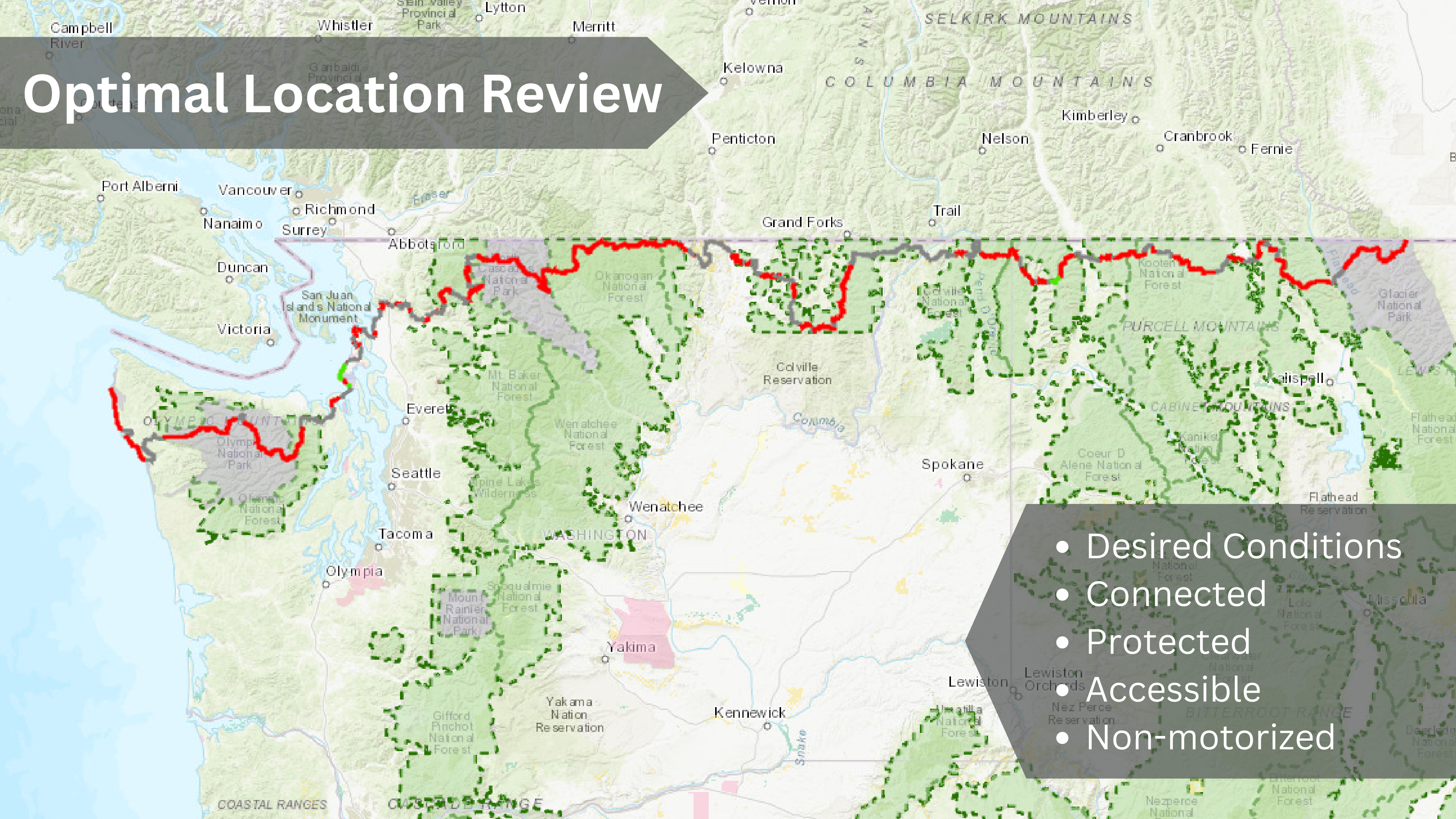


RANDY MOORE
Chief

December 12, 2023

Date

Optimal Location Review



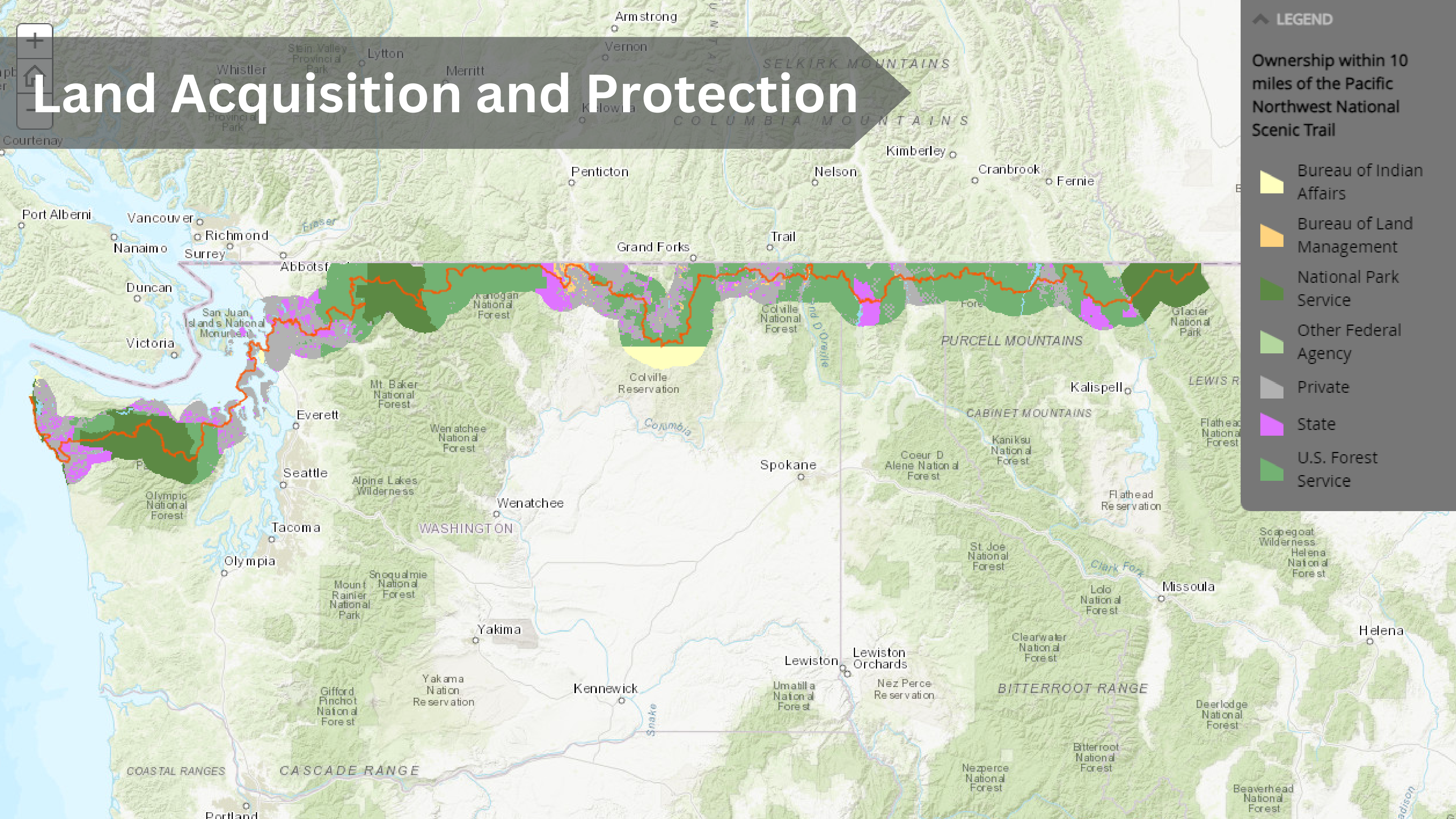


Land Acquisition and Protection

LEGEND

Ownership within 10 miles of the Pacific Northwest National Scenic Trail

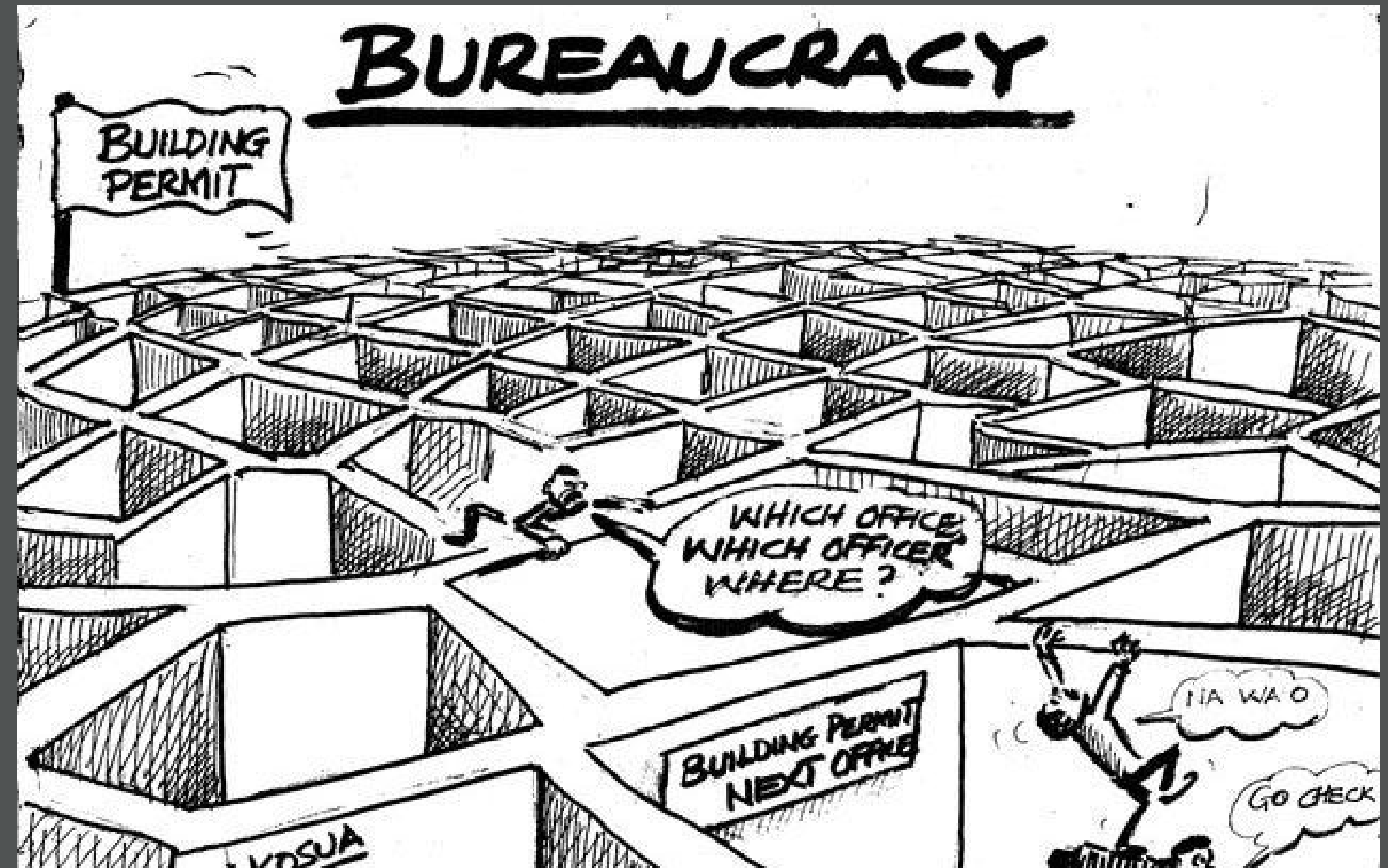
- Bureau of Indian Affairs
- Bureau of Land Management
- National Park Service
- Other Federal Agency
- Private
- State
- U.S. Forest Service



Challenges of National Scenic Trail Designation

National Scenic Trails are great, but with the benefits come:

- added management complexities
- more rules to follow
- mandatory processes to undergo
- handing over some control
- inevitable delays





PACIFIC NORTHWEST
— TRAIL —
→ CONTINENTAL DIVIDE
← PACIFIC OCEAN

ANSPORT

PNW TRAIL
GLACIER
NATL. PARK
TO
PACIFIC
1977

PNW TRAIL
GLACIER
NATL. PARK
TO
PACIFIC
1977