

# Visitor Center Trail Lake Clark National Park

Presented to Land Managers Forum

November 15, 2023

Warren Hill, NPS

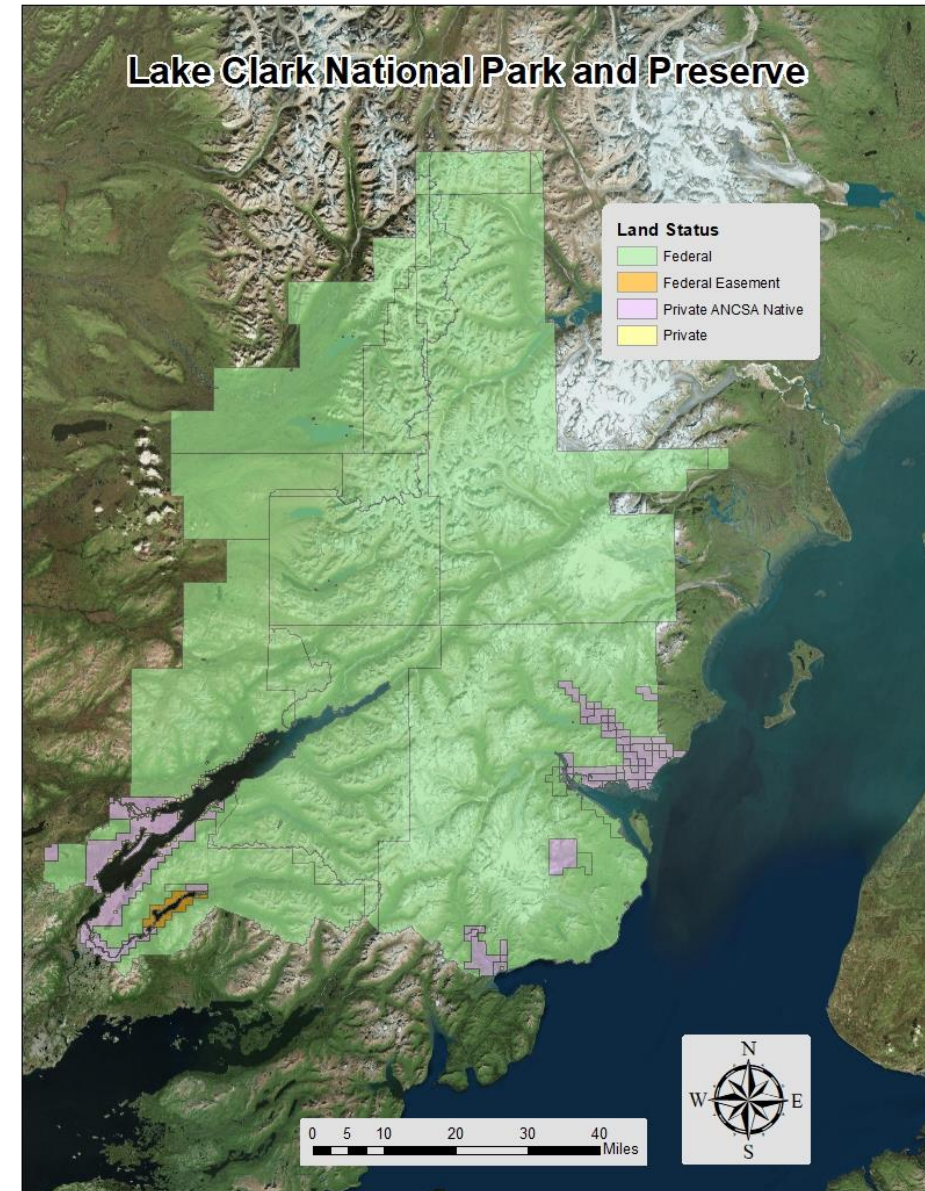
Tim George, Kijik Corporation



# Lake Clark National Park

## Introduction

- *4,030,006 acres*
- *16,500 visitor use days in 2022*
- *13 miles of developed trail, no roads*
- *Mixed land ownership, ANILCA park*
- *No road access means it's very difficult and expensive to complete large projects*



---

# Lake Clark National Park History and Culture

- *People*

Qizhjuh Vena/Lake Clark is the ancestral homelands for the Dena'ina Athabascan people

- *Places*

The cultural value of tinitun (trails) have deep, multilayered meanings and uses in inland Dena'ina tradition

- *Subsistence*

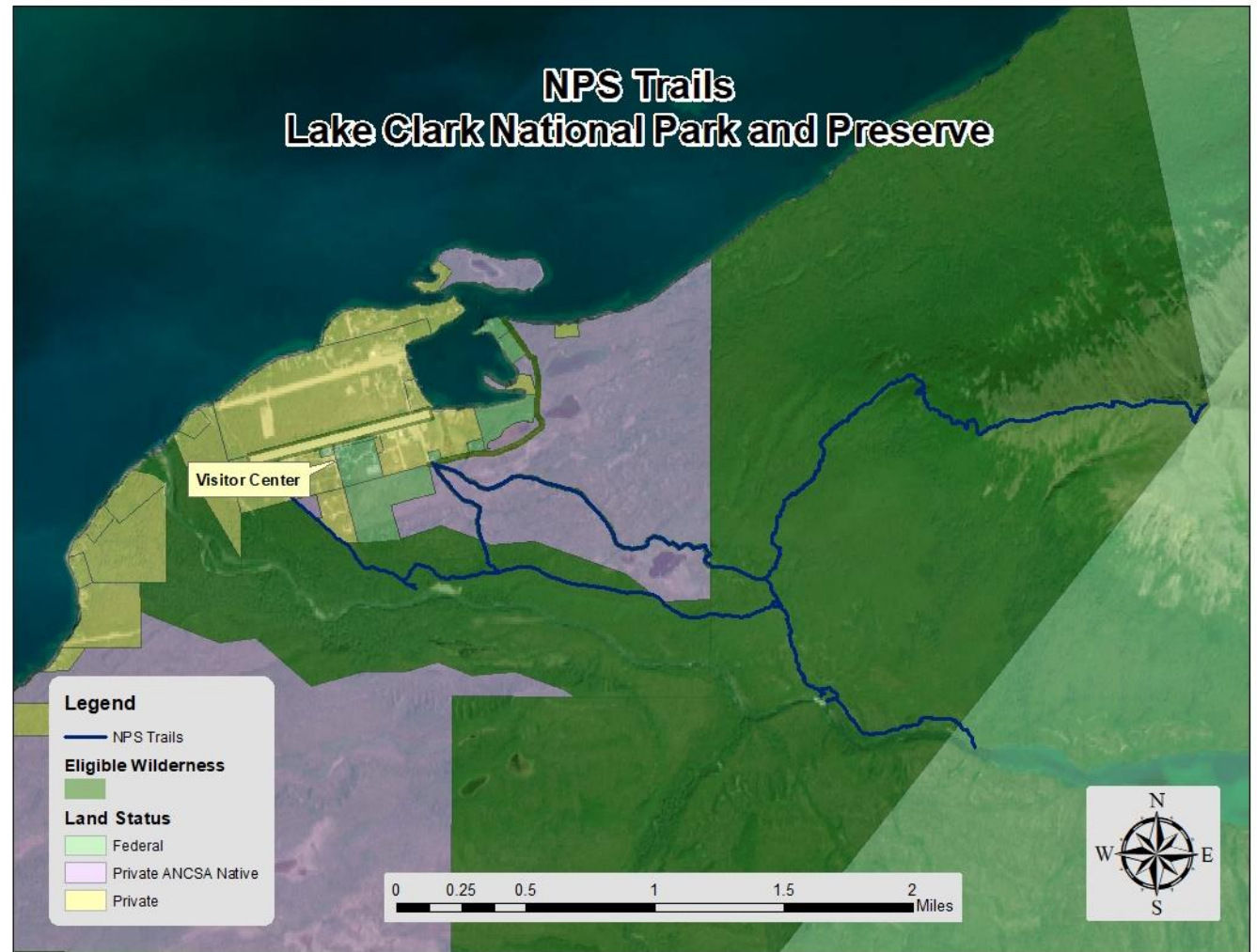
Many generations of the Dena'ina people have passed down values and techniques necessary to sustain their subsistence culture and way of life





# Lake Clark National Park Trails

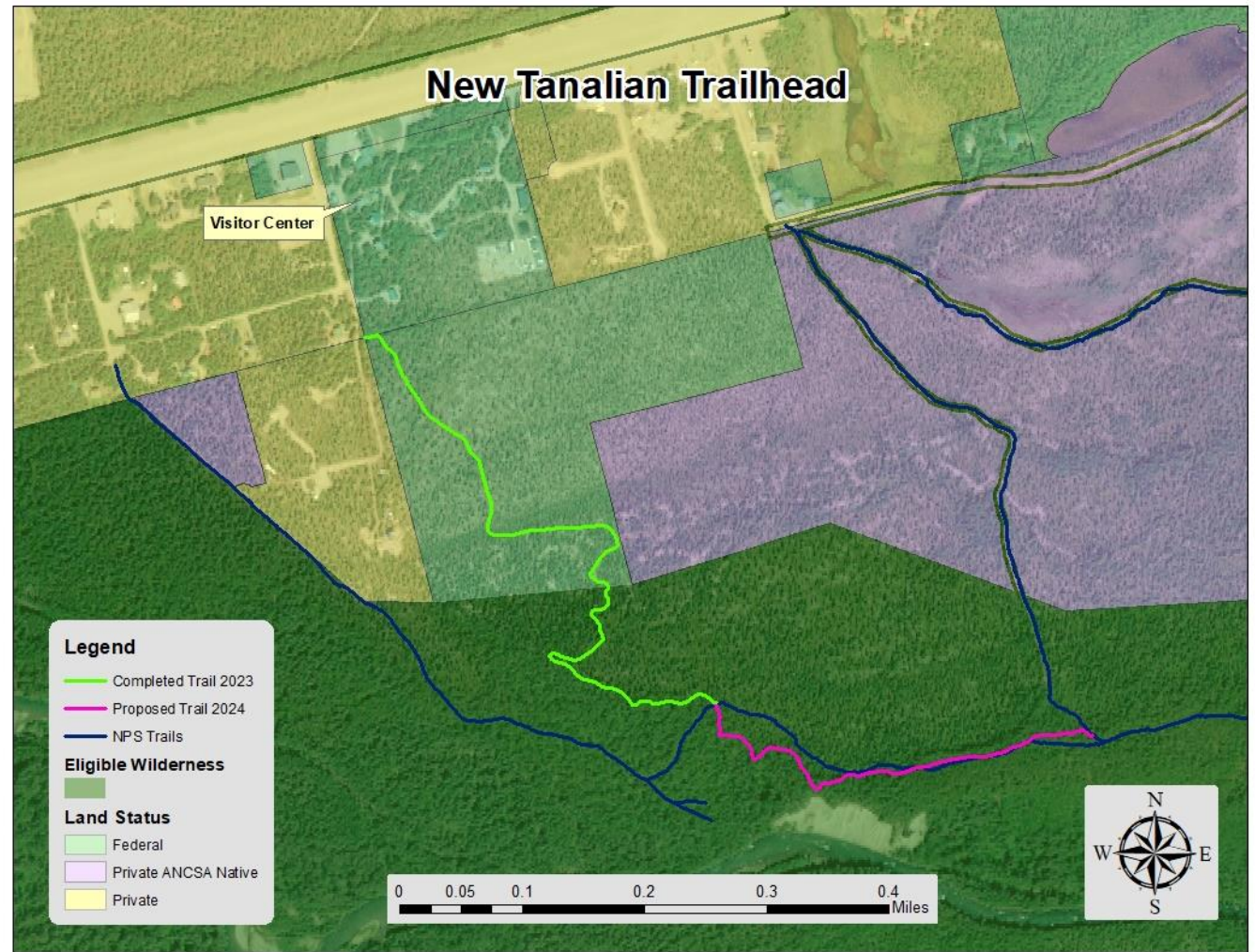
- *8 miles of maintained trail near Park Headquarters - 3000 users in 2023.*
- *Trails in place before Park creation (1980) start and/or **cross private property**.*
- *The original trails constructed before sustainable trail design concepts.*
- *New trail goals:*
  - Public access
  - Sustainable trails standards.





# Lake Clark National Park 2023 Trail Project

- *New trail alignment shown in green. Starts near Park HQ and visitor center*
- *New trail avoids:*
  - dusty and busy runway/roadway
  - confusing network of roads and private property.
- *Public trails +private property = complexity:*
  - Disallowed any re-alignment.
  - Conflicts with private land development.
- *New trail is more user friendly, easy to find by visitors, and easier to maintain/manage by the N.P.S.*





---

# Trail-work Capacity & Workforce Development

- *Student Conservation Association (SCA) Crews*
- *Strengthened relationship with adjacent Alaska Native land-owners*
- *Contractor commitment to local hire engaging community stakeholders and tribes*





---

# Kijik Corporation Introduction

- *Alaska Native Corporation*

*Kijik Corporation (Kijik) is an Alaska Native Corporation for Nondalton, a village in Southwest Alaska.*

*Kijik provides cultural, social, and economic benefits to over 500 shareholders of Athabascan descent.*

*Our trails work is led by **Tim George**, Trails Group Director.*





---

## 8(a) Contracting

- *Small Business Administration -defined contracting process*
- *Simplified and shortened procurement*
- *Flexibility, collaboration*
- *Supports small disadvantaged contracting goals*





---

# Setting up for summer success

- *Proper Planning Prevents Poor Performance*
- *What is it going to take to get this job done*
- *Re-baseline workplan and schedule*





---

# The Deep Dive

- Budget
- Hiring
- Logistics/Remoteness
- Timeframe/Work Schedule
- Trail Specs, design/layout, actual construction and restoration
- Crew training





---

# Site Visit and Mobilization

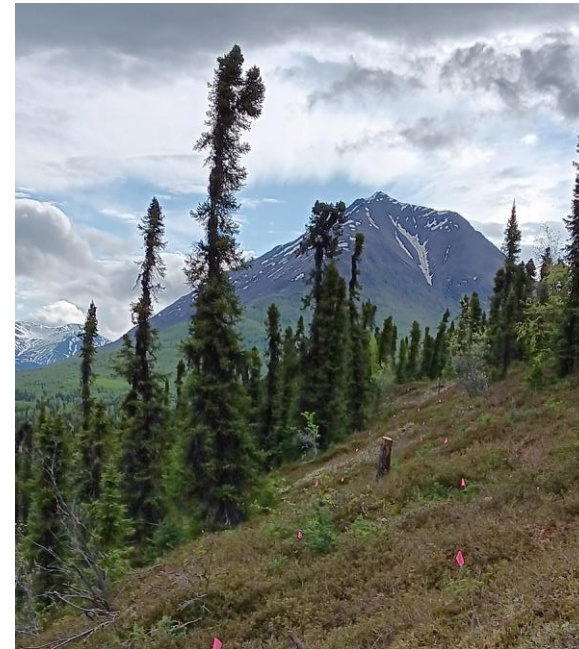
---



---

# Clearing the Trail Corridor

---





---

# Construction in Eligible Wilderness

---





---

# Stump Removal and Tread Construction

---





---

# Trail Tread Inversion Technique





---

# Final Trail Tread within Eligible Wilderness

---





---

# Arrival of equipment and working the flats

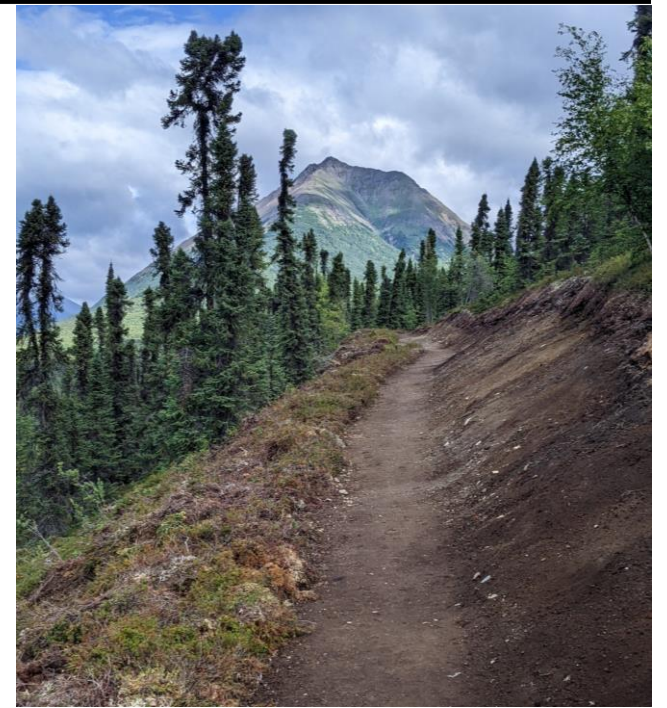
---





---

# Bench Cut Tanalian Peak to the North









---

# Top of Bench Cut

## Views out across Port Alsworth and the Lake

---

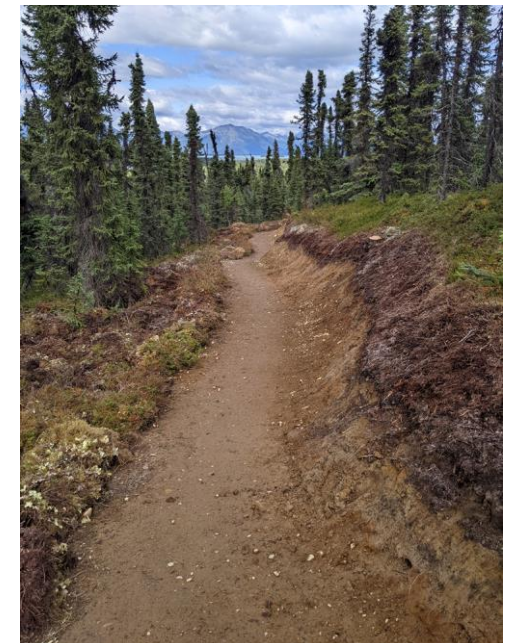




---

# Working towards the Wilderness Boundary

---



# Where Mechanized meets Pulaski





---

# Working towards final trail tread on the flats





---

Where new trail  
meets existing trail  
system

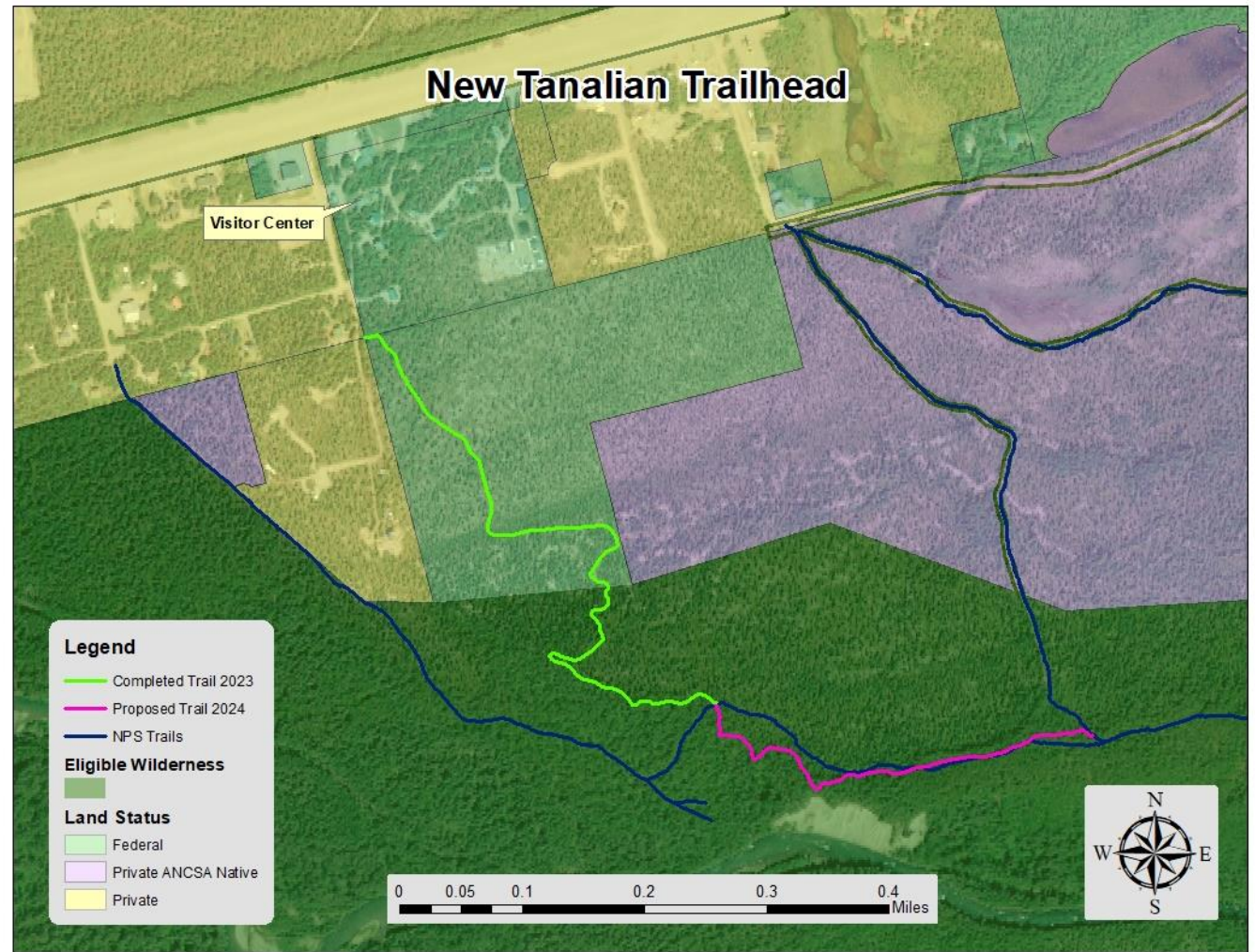
---





# Lake Clark National Park Future Projects

- *The pink line is proposed for future work*





---

# Questions?

*Warren Hill, LCNP Work Supervisor*  
[charles\\_hill@nps.gov](mailto:charles_hill@nps.gov)

*Tim George, Kijik Trail Group Director*  
[tgeorge@kijikcorp.com](mailto:tgeorge@kijikcorp.com)

