

Presentation Outline

- Introduction (*Brian Looney*)
- Safety Moment
- Smart Cycling (*Brian*)
- Bike Maps (*Kelly Yanoshek*)
- **Continuous Routes for Walking and Biking**
(*Colin Singleton*)
- Mapping Activity (*Christi Meyn and Kelly*)
- Continuous Routes for Walking and Biking (*Colin*)
- Q & A

Introductions

CRW Engineering Group – who are we?

- ▶ 65 person multi-discipline firm
- ▶ Civil, mechanical, electrical, structural, engineering, surveying, geotechnical
- ▶ Transportation, utilities, sanitation, energy, infrastructure
- ▶ Statewide projects
- ▶ Anchorage and Palmer office
- ▶ Started in 1981

Safety Moment

Lights, Bell, and Helmet while biking

- Lights & reflectors
 - Lights required from dusk to dawn
 - Front white light
- Bell (audible warning device)
- Helmet - required when 15 or under

Required per AMC Title 9.38

Smart Cycling Training

By the League of American Bicyclists

- ▶ Improve safety
- ▶ Learn basic bicycling skills
- ▶ Build confidence
- ▶ For all ages and abilities
- ▶ Taught by certified instructors
- ▶ 9 hour class
 - Classroom, parking lot, and on-street

Smart Cycling - Outline

- Basics
 - Equipment, clothing, maintenance, skills
- Riding Principals
 - Groups, paths, night, long distance
- Traffic Law
 - Lane positioning, Intersections
- Hazards
 - Crashes, safety, evasive maneuvers

Rules

- *Follow the law*
- *Be predictable*
- *Be conspicuous*
- *Think ahead*
- *Ride ready*

Traffic Law

Bicyclists have the same basic rights and responsibilities as motorists.

Where should I ride on the road?

- ▶ Ride as far right “as practicable”
 - ▶ Safe and reasonable
 - ▶ Typically 3' of clear space (AMC 9.16.030)
 - ▶ Faster traffic requires more clear space
- ▶ Ride with traffic flow
- ▶ Allow room to maneuver

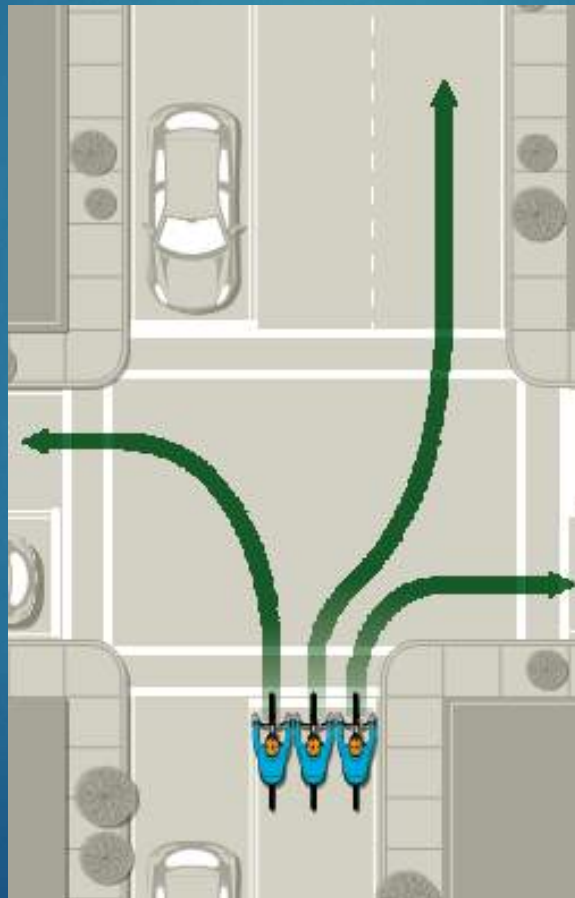
Speed & Lane Positioning

- ▶ Speed Positioning
 - ▶ Slower traffic stays on right
 - ▶ Only pass on the left
 - ▶ bike lanes are exception
- ▶ Lane Positioning
 - ▶ Use right-most lane going your direction
 - ▶ Take entire lane when necessary (<14')
 - ▶ Watch for door zone
- ▶ Changing Lanes
 - ▶ Scan, signal, move

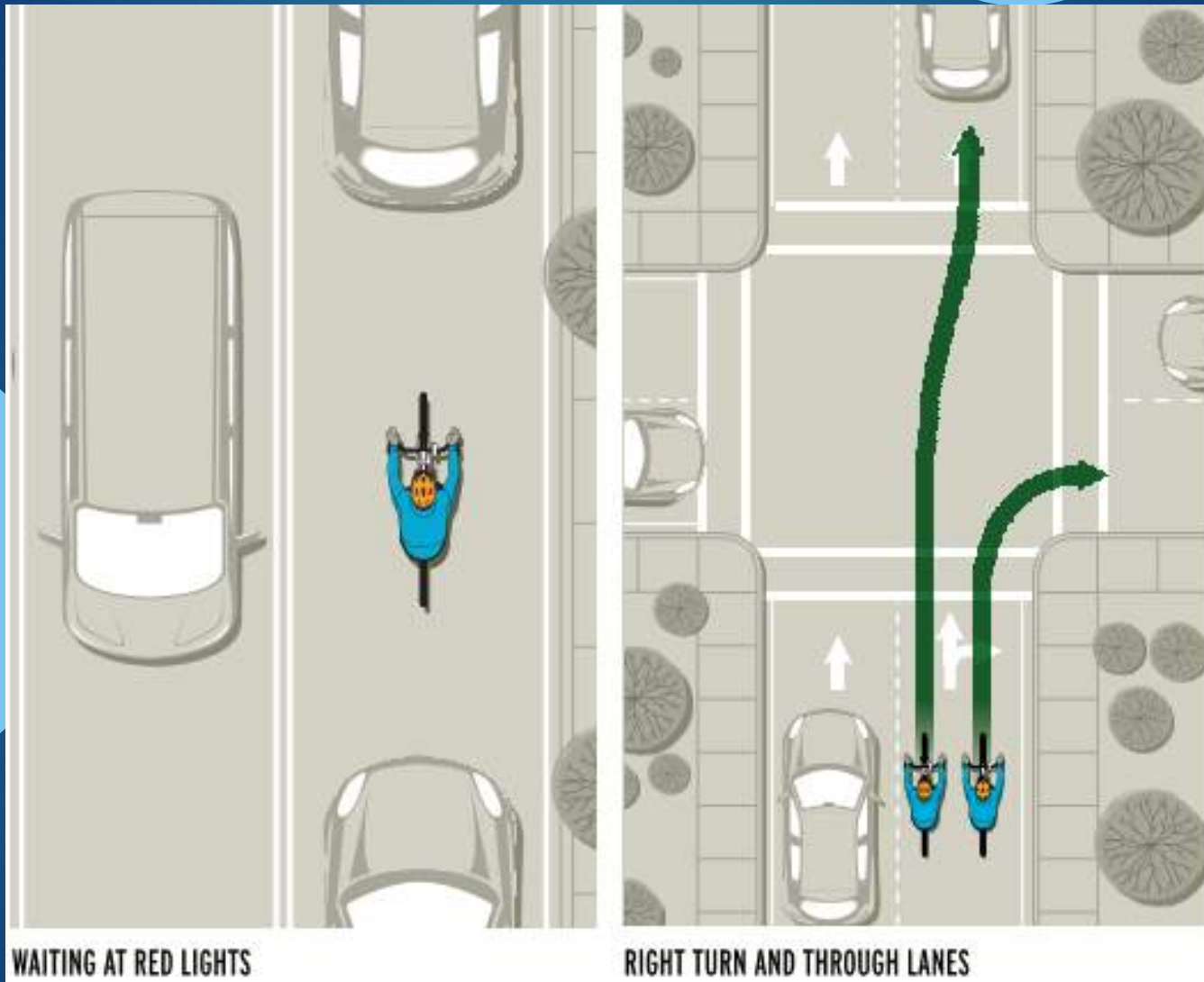


Intersections

- ▶ Intersection Positioning
 - ▶ Use right-most lane going your direction



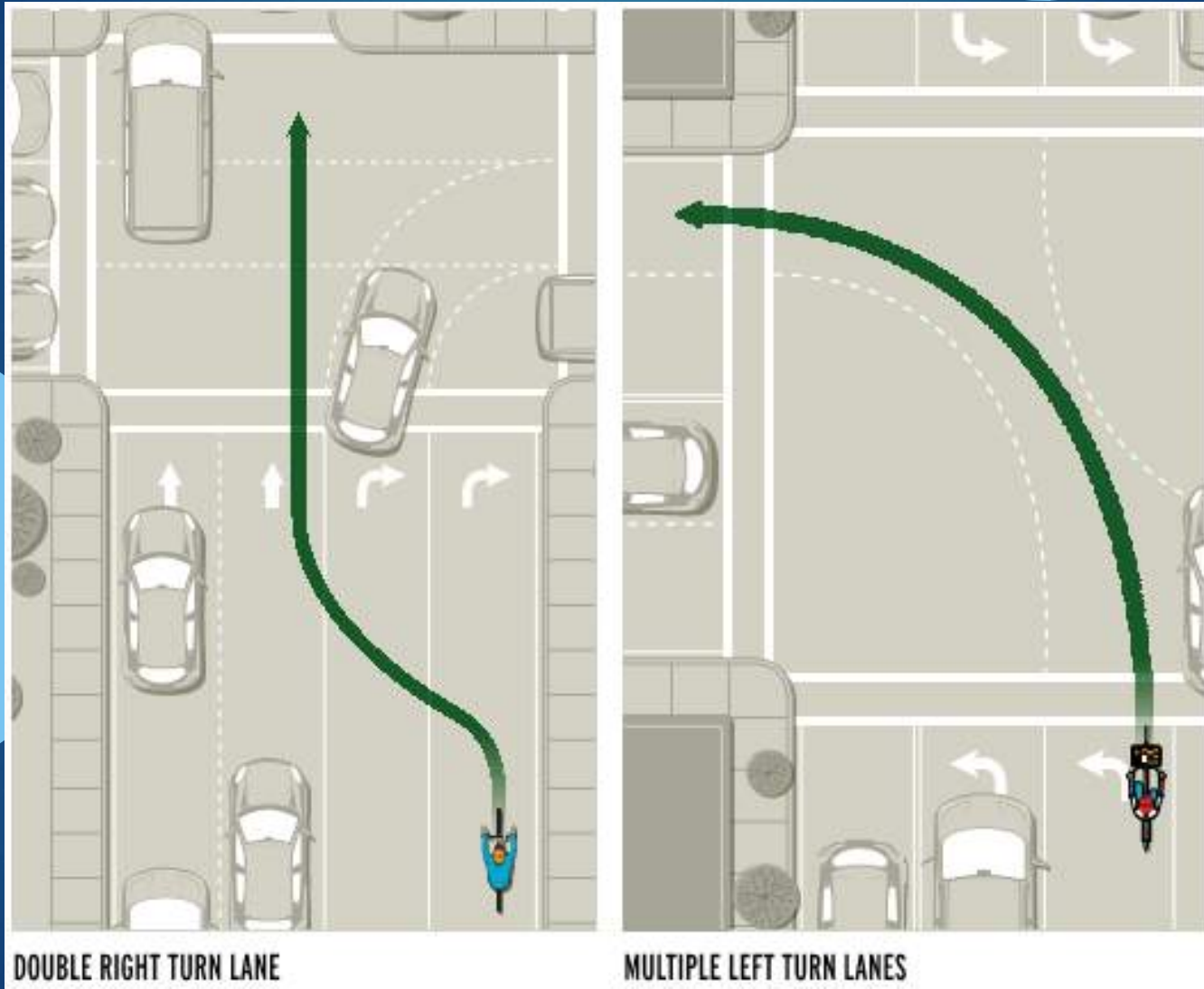
Intersections



WAITING AT RED LIGHTS

RIGHT TURN AND THROUGH LANES

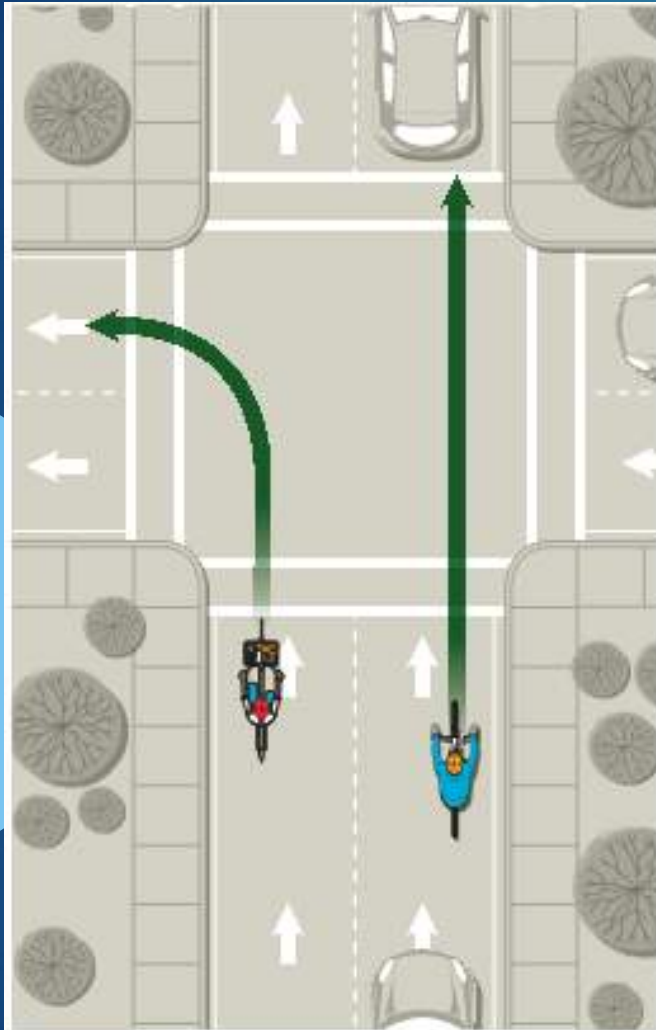
Intersections



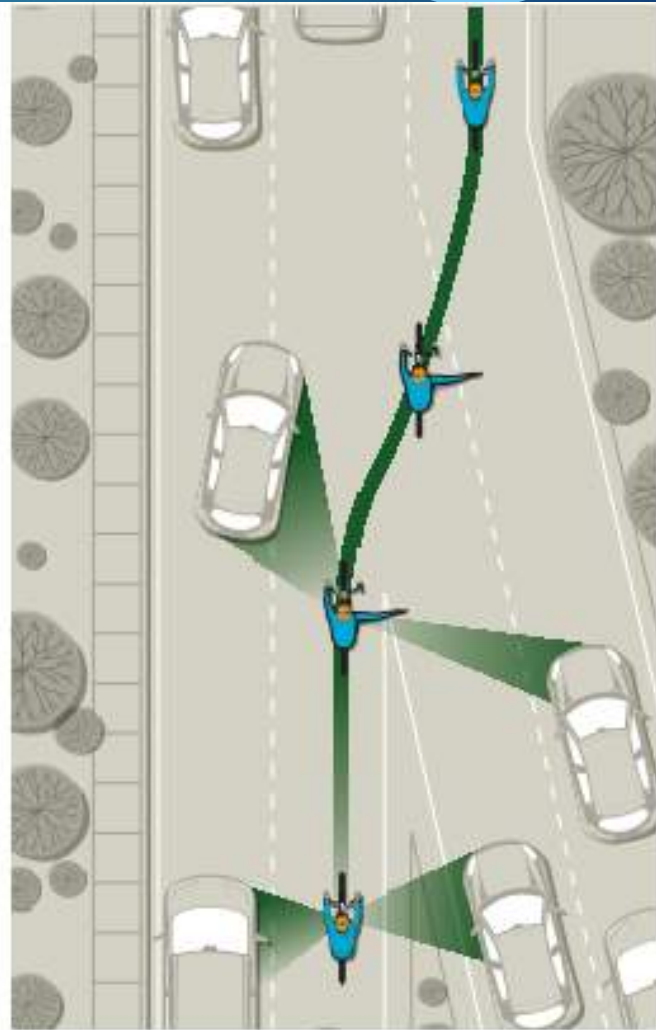
DOUBLE RIGHT TURN LANE

MULTIPLE LEFT TURN LANES

Intersections



ONE-WAY STREETS WITH TWO OR MORE LANES



ON- AND OFF-RAMPS; MERGING AND SPLITTING TRAFFIC